

A TOPOGRAPHICAL CHART  
of the  
**ENTRANCE OF THE RIVER TAGUS,**

DESCRIBING  
the Coast from Cape Roca to Sacavem,

with the  
**Harbour and Environs of Lisbon.**

THE NAUTICAL PART IS FROM A SURVEY TAKEN IN 1806 BY W. CHAPMAN, MASTER OF THE ROYAL NAVY;

and Approved by the  
Chart Committee of the Admiralty.

The Interior and Line of the Coast are drawn from Surveys made by Officers of the  
**QUARTER MASTER GENERAL'S DEPARTMENT.**

LONDON:

Published by W. FADEN, Geographer to HIS MAJESTY and to HIS ROYAL HIGHNESS the PRINCE OF WALES, Charing Cross, Jan<sup>y</sup> 1810.

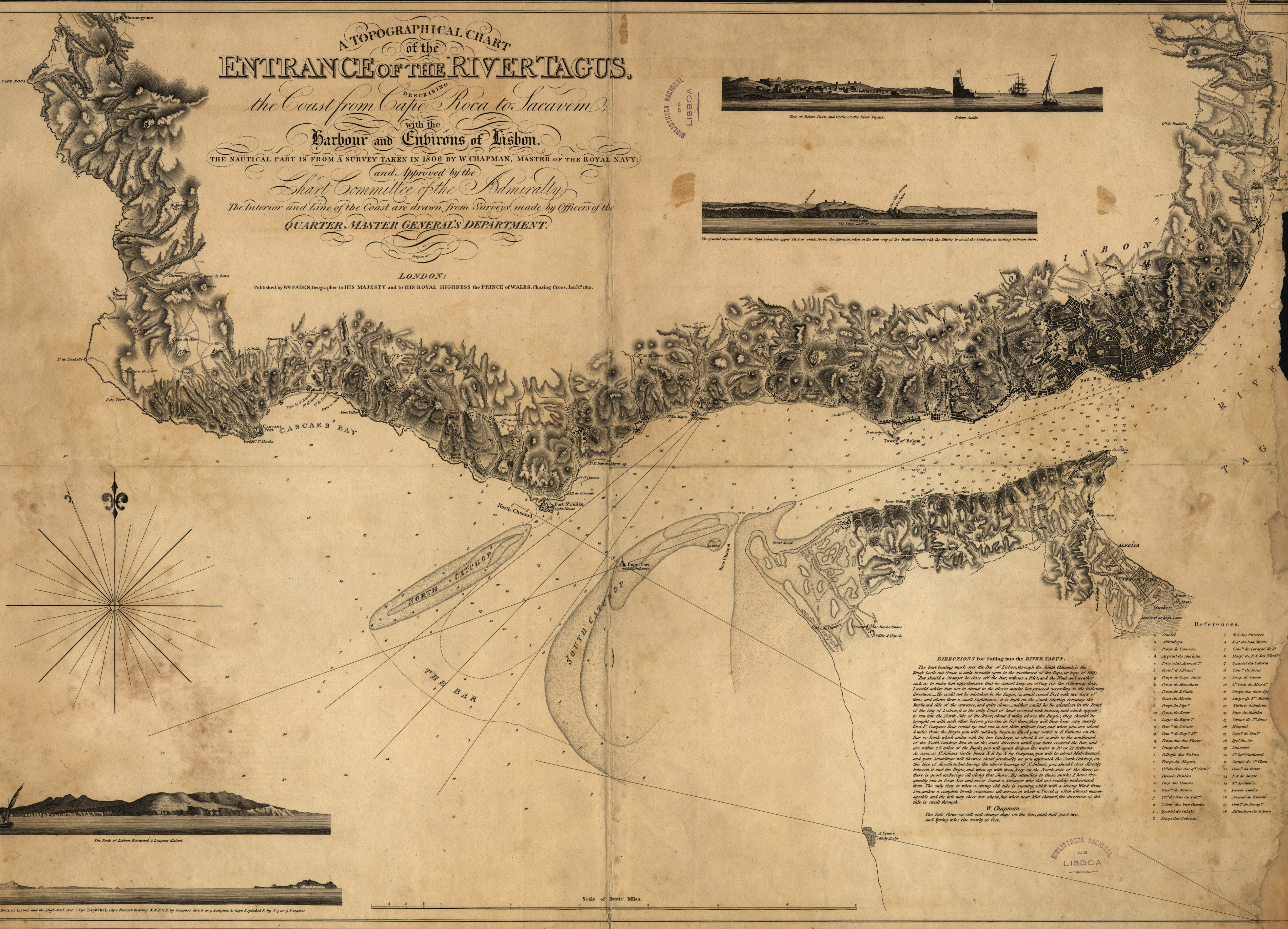


View of Belem Tower and Castle on the River Tagus.

Belem Castle



The general appearance of the High Land, the upper part of which forms the Horizon, when in the Fair-way of the South Channel, with the Marks to avoid the Catchops, in turning between them.



**DIRECTIONS for Sailing into the RIVER TAGUS.**

The best landing mark over the Bar of Lisbon, through the South Channel, is the King's Look out House a mile breadth open to the northward of the Digue, or top of Hill. But should a Stranger be close off the Bar, without a Pilot, and the Wind and weather such as to make him apprehensive that he cannot keep an offing for the following day, I would advise him not to attend to the above marks but proceed according to the following directions. He could not be mistaken in the Digue, a small round Fort with two towers of guns, and above them a small Lighthouse; it is built on the South Catchop forming the Starboard side of the entrance, and quite alone, neither could he be mistaken in the Point of the City of Lisbon, it is the only Point of land covered with houses, and which appear to run into the North side of the River, about 9 miles above the Digue; they should be brought on with each other before you run in for them, they will then bear very nearly East E. Compose your round up and run in for them without fear, and when you are about 4 miles from the Digue, you will suddenly begin to smell your water to 6 fathoms on the Bar or Bank, which unless with the two Catchops, at about 5 of a mile to the southward of the North Catchop run in on the same direction until you have crossed the Bar, and are within 2 1/2 miles of the Digue, you will again drop the water to 10 or 12 fathoms. As soon as St. Julian's Castle bears N. E. by N. by Compass, you will be about Mid-channel, and your Soundings will likewise show gradually as you approach the South Catchop, on the line of direction, but having the above bearing of St. Julian's, you should steer directly between it and the Digue, and when up with them, keep on the North side of the River, as there is good anchorage all along the Shore. By attending to these marks I have frequently run in from sea and never found a Stranger who did not readily understand them. The only fear is when a strong tide is running, which with a strong Wind from Sea, makes a complete break sometimes all across, in which a Vessel is often almost unmanageable and the tide may show her shore, but when near Mid-channel the direction of the tide is straight through.

W. Chapman.

The Tide flows on full and change days on the Bar, until half past two, and Spring tides rise nearly at two.

**References.**

- a. Citadel
- b. St. S. das Encarnas
- c. Alameda
- d. S. J. do Bom Morer
- e. Praça de Comercio
- f. Casa do Correio de J.
- g. Arsenal de Marinha
- h. Hosp. de S. S. N. S. N. S.
- i. Praça das Armas
- j. Casa de S. S. S. S.
- k. Praça de S. S. S. S.
- l. Praça de S. S. S. S.
- m. Praça de S. S. S. S.
- n. Praça de S. S. S. S.
- o. Praça de S. S. S. S.
- p. Praça de S. S. S. S.
- q. Praça de S. S. S. S.
- r. Praça de S. S. S. S.
- s. Praça de S. S. S. S.
- t. Praça de S. S. S. S.
- u. Praça de S. S. S. S.
- v. Praça de S. S. S. S.
- w. Praça de S. S. S. S.
- x. Praça de S. S. S. S.
- y. Praça de S. S. S. S.
- z. Praça de S. S. S. S.



The Rock of Lisbon, Eastward 2 Leagues distant.



Appearance of the Rock of Lisbon and the High Land over Cape Espichel, Cape Rosset bearing N. N. E. E. by Compass dist 6 or 9 Leagues, S. Cape Espichel E. by S. 4 or 5 Leagues.

Scale of Nautic Miles.

BIBLIOTECA NACIONAL LISBOA