

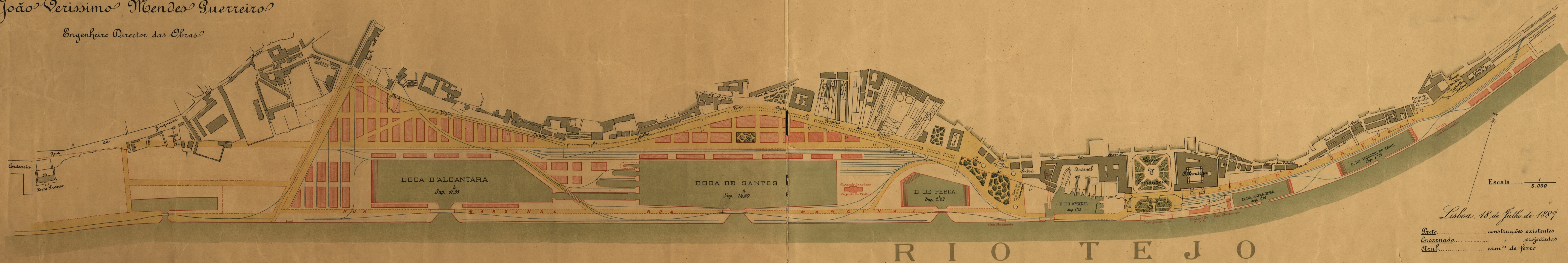
**PORTO DE LISBOA**

**PLANO GERAL**

ELABORADO POR

*João Verissimo Mendes Guerreiro*

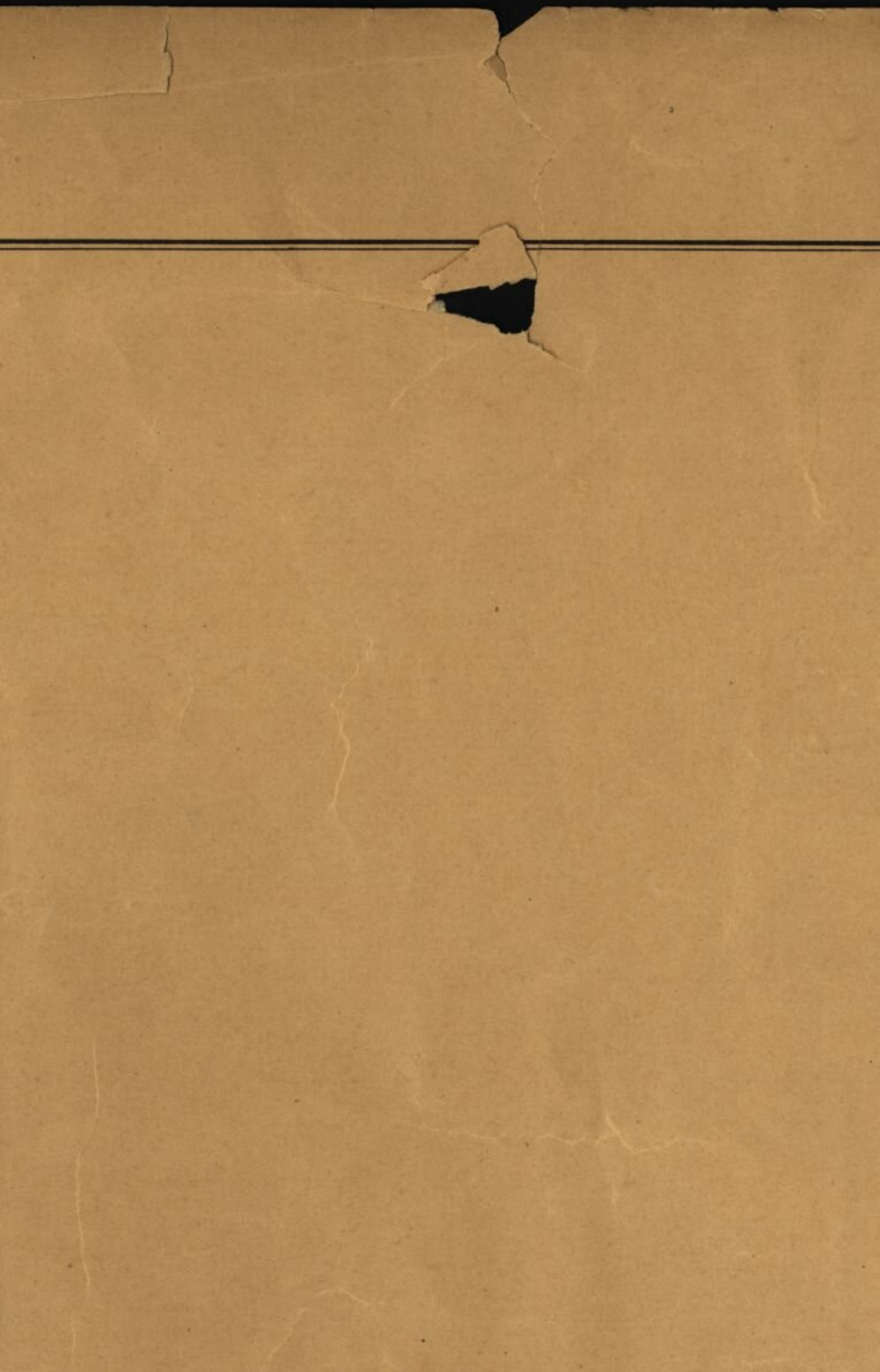
*Engenheiro Director das Obras*

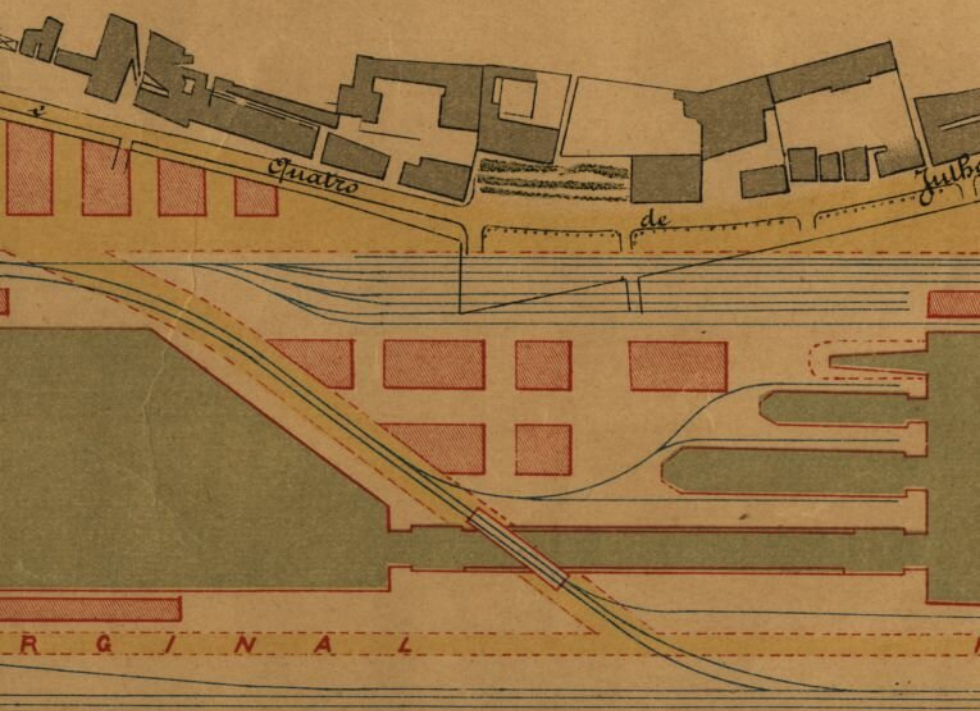


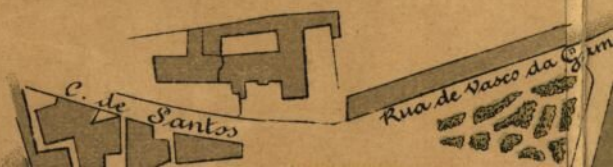
Escala..... 1/5.000

Lisboa, 18 de Julho de 1887

<i>Preto</i> .....	construções existentes
<i>Encarnado</i> .....	" projectadas
<i>Azul</i> .....	cam.º de ferro

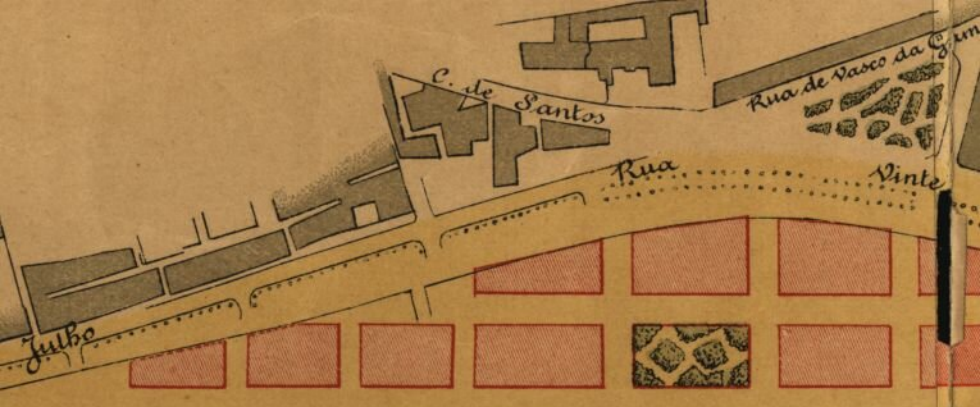






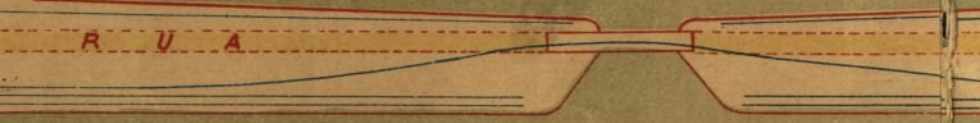
C. de Santos

Rua de Vasco da Gama



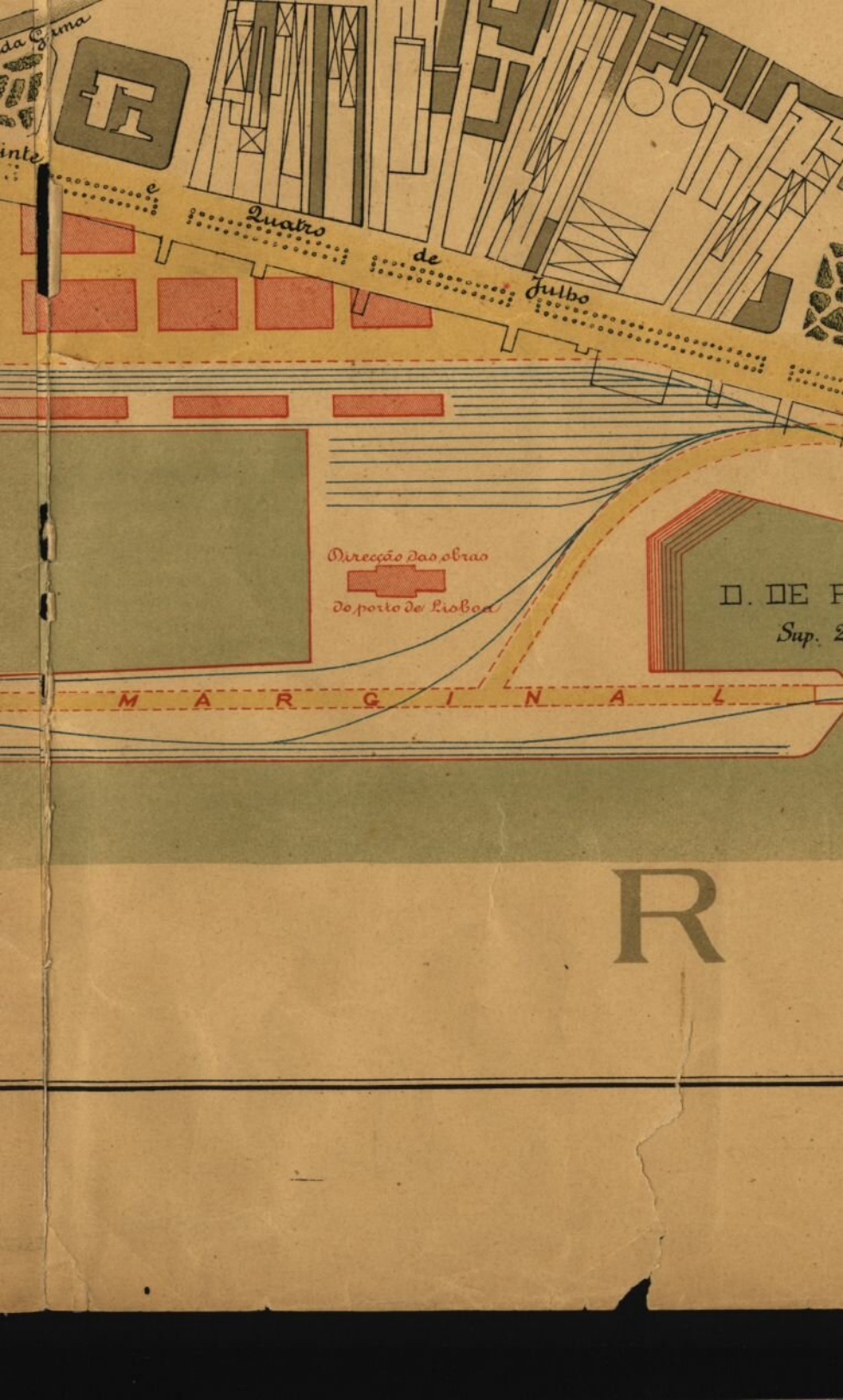
DOCA DE SANTOS

*Sup.* <sup>h</sup> 14,80



da Lima





da Gama  
inte



Quatro

de

Julho

Direcção das obras



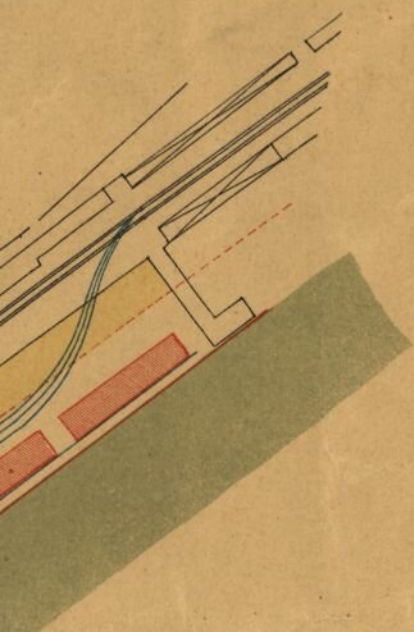
do porto de Lisboa

D. DE F

Sup. 2

M A R G I N A L

R





la.....  $\frac{1}{5.000}$

*Julho de 1887*

*ruções existentes*  
*" projectadas*  
*os de ferro*

e' CC 1176-78