

Dolce

per-gey me hij Ho - po hij Ho po et mun da bor As pergey me hij

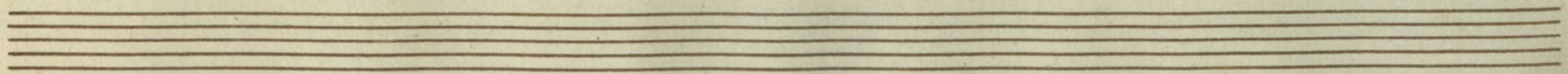
The first system of the handwritten musical score consists of two staves. The upper staff is the vocal line, and the lower staff is the piano accompaniment. The tempo is marked 'Dolce'. The lyrics are 'per-gey me hij Ho - po hij Ho po et mun da bor As pergey me hij'. The piano part features a rhythmic accompaniment with many beamed eighth notes.

So po as perges me hij Ho po et mun da

The second system of the handwritten musical score consists of two staves. The upper staff is the vocal line, and the lower staff is the piano accompaniment. The tempo is marked 'Dolce'. The lyrics are 'So po as perges me hij Ho po et mun da'. The piano part continues with a rhythmic accompaniment. There are some markings like 'unc:' and 'da' above the notes.

Allegretto
 Bor La va - - - - - by la va by la va by me

The third system of the handwritten musical score consists of two staves. The upper staff is the vocal line, and the lower staff is the piano accompaniment. The tempo is marked 'Allegretto'. The lyrics are 'Bor La va - - - - - by la va by la va by me'. The piano part features a more active accompaniment with many beamed eighth notes.

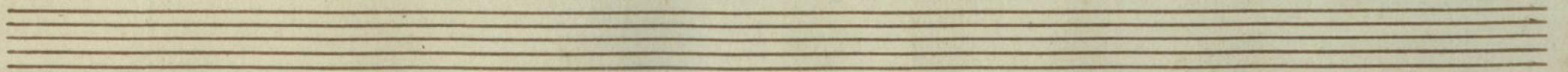


et Super Super nivē su per ni vem de al - labor as

Ande Com motto

perges me hij so po hij so po et mundabor la - va - by la va by me et su - per super

ni vem de al ba - - - - - " - - - - -



bor Super ni vem de al ba — — — bor et Super ni vem

de al ba — — — bor.

dimin:

Finit





Solo

Ande $\frac{4}{8}$ $\frac{4}{4}$ *ad libitum*

atempo *As per - - - ges -*

me Asperges me hij so po hij so po et munda bor As -

perges me hij - - - so po ay perges me hij so po et mun

Allegretto *Da - - - bor La va -*

- - - by la - va by la va by me et Super Super

nivem Super ni vem de al babor ay perges me hij -

Ande Con molto *so po hij so po et mundabor la - va - by la va by*

me et Super Super nivē de al ba - - -

127
2

bor Super ni vem de al ba — bor

et Super nivem de al ba —

bor.

diminuendo