

1231
1

Gradual do S^{mo} Natal de N. S. J. C.
a 4 Vozes e 3 Orgãos



Para uma das Relecionistas de Sta Clara
da Cidade do Porto

Composto

Pello Sr Antonio da Sa Leite

em

1803



And^{te} Com moto

Org.
Gr^{da}

Organ and Grand Organ accompaniment. The Grand Organ part features a melodic line with a trill-like figure in the first measure, followed by a series of chords and single notes. The Organ part provides harmonic support with chords and single notes.

Tiple 1^o

First Soprano vocal line. It begins with a whole rest, followed by the lyrics "Do mi nus di xit ad me" and "Do mi nus". The notes are marked with dynamics like *f.* and *do. le*.

Tiple 2^o

Second Soprano vocal line. It begins with a whole rest, followed by the lyrics "Do mi nus" and "Do mi nus". The notes are marked with dynamics like *f.*

Tiple 3^o

Third Soprano vocal line. It begins with a whole rest, followed by the lyrics "Do mi nus" and "Do mi nus". The notes are marked with dynamics like *f.*

Basso

Bass vocal line. It begins with a whole rest, followed by the lyrics "Do mi nus" and "Do mi nus". The notes are marked with dynamics like *f.*

Org.

Organ accompaniment. The first measure contains the word "unij" and the rest of the staff contains chords and single notes.

Novo

Novo organ part. The first measure contains the word "Colgr^{se}" and the rest of the staff contains chords and single notes.

Org.
no
fig.

Organ figure part. It begins with the word "unij" and contains a melodic line with a trill-like figure in the first measure, followed by a series of chords and single notes. A measure number "87" is written above the staff.

tr

tr

dolo

Di xit ad me Di xit ad me Fi li u me - u es

Di - xit dixit ad me

unij Col 2a

Di - xit dixit ad me.

Col grad

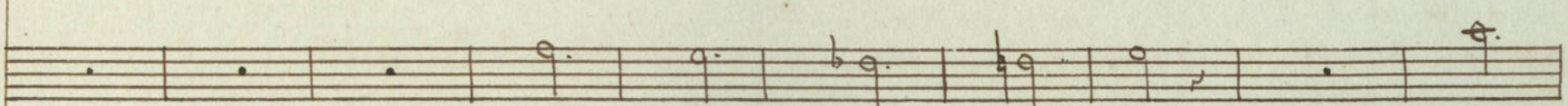
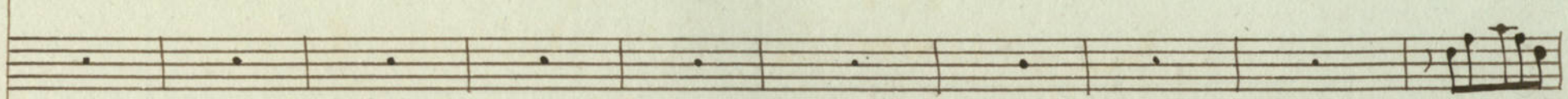
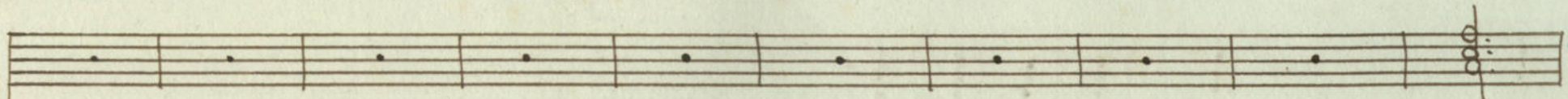
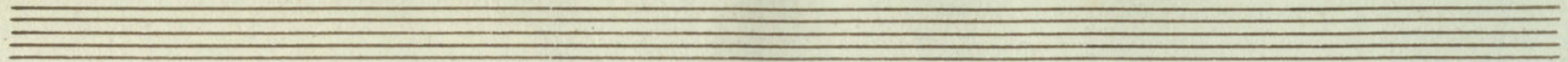
unij

6 65 6 7

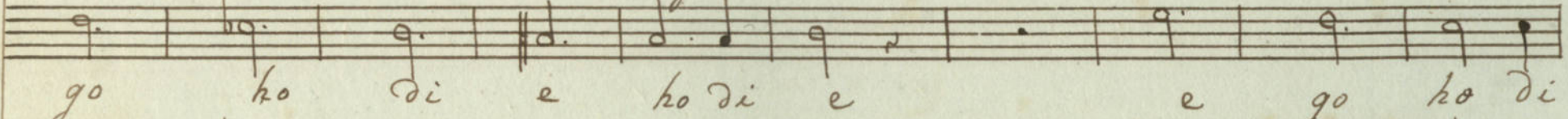
A handwritten musical score on aged paper, consisting of ten staves. The top two staves are empty. The third staff contains the vocal line with lyrics: "tu Filius meus tuus Filius meus meus es". The fourth and fifth staves contain piano accompaniment with lyrics: "Filius meus tuus Filius meus meus es". The sixth and seventh staves continue the piano accompaniment with lyrics: "Filius meus meus es". The eighth and ninth staves are for the organ, marked with a "G^{de}" clef. The bottom staff contains figured bass notation with numbers: 6, 6, 5 7, 6 5 7, 5 3, 3, 6, 5.



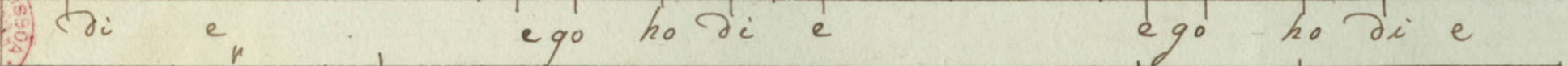
Handwritten musical score consisting of ten staves. The top two staves are empty. The third staff contains the vocal line with lyrics: "tu es tu es tu e go ho di e". The fourth staff contains the vocal line with lyrics: "tu es tu es tu e". The fifth staff contains the vocal line with lyrics: "tu es tu e go ho". The sixth staff contains the vocal line with lyrics: "tu es tu". The seventh staff contains the piano accompaniment with a *mf* dynamic marking. The eighth staff contains the piano accompaniment with a *mf* dynamic marking. The ninth staff contains the piano accompaniment with a *mf* dynamic marking. The tenth staff contains the piano accompaniment with a *mf* dynamic marking. The score includes various musical notations such as notes, rests, and dynamic markings.



e go ho di e e



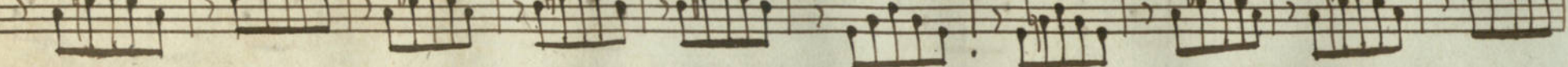
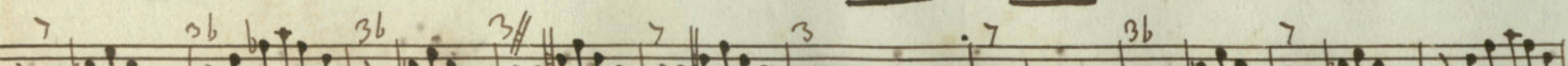
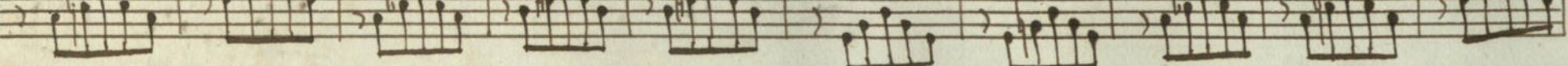
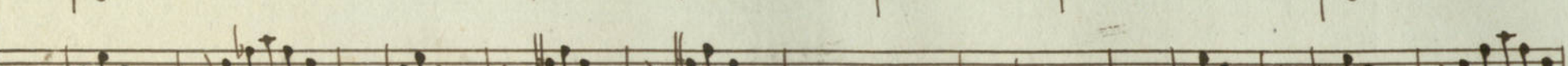
go ho di e ho di e e go ho di



di e ego ho di e ego ho di e

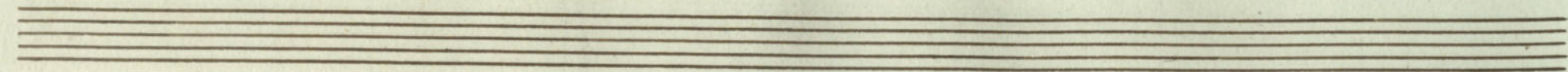


e go ho di e e go ho di e e



Handwritten musical score for a vocal piece, featuring ten staves. The music is written in a single system with a common time signature (C) and a key signature of one flat (B-flat). The lyrics are in Latin and are written in a cursive hand below the vocal line. The score includes various musical notations such as notes, rests, and ornaments. The lyrics are: go hodie genu i te ge — mui te e hodie genu i te e — go e go hodie genu i te e — go go hodie genu i te e — go. The bottom staff contains some numerical markings (5, 6, 5, 6) and a '7b' marking, possibly indicating fingerings or specific notes.

go hodie genu i te ge — mui te
e hodie genu i te e — go
e go hodie genu i te e — go
go hodie genu i te e — go



e-go hodie, e-go e-go hodie e-ge nu i te

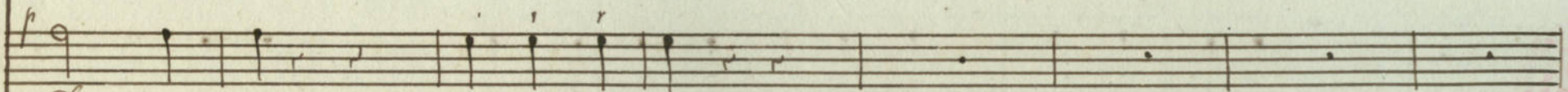
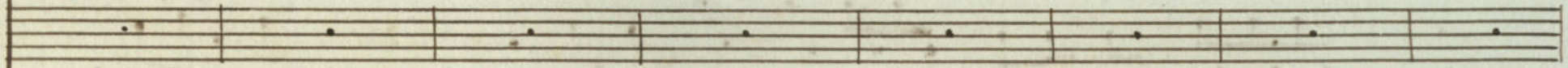
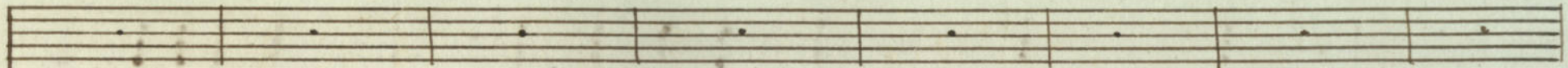
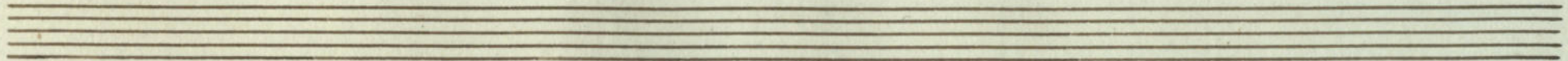
hodie e-ge-nu i te e-go hodie e-ge nu i te -- Do --

hodie e-ge-nu i te e-go e-go hodie e-ge-nu i te

hodie e-ge-nu i te hodie e-ge-nu i te

6543 43

6
5

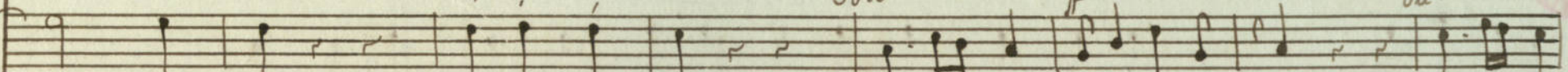


Do mi nus dixit ad me.

Solo

f

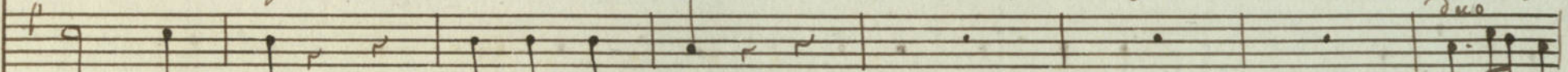
Duo



mi nus dixit ad me

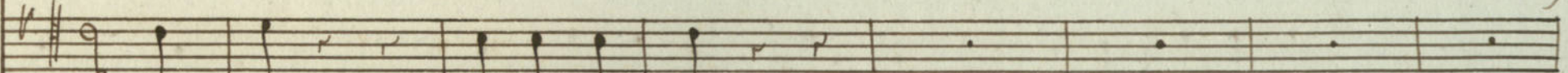
Fi li us me us es tu

Fi li us

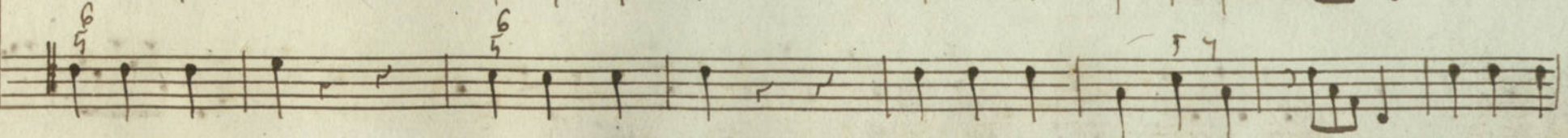
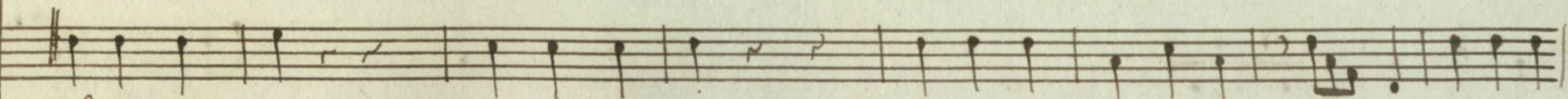
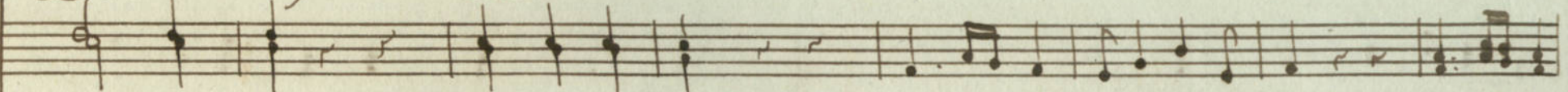


Do mi nus dixit ad me

Fi li us



Dom i nus dixit ad me





Handwritten musical score for a vocal piece. The score consists of ten staves. The first two staves are instrumental accompaniment. The third staff begins with the lyrics: *Fi li uy me uy Fi li uy me uy es tu es tu*. The fourth staff continues: *me uy es tu Fi li uy Fi li uy me uy es tu es tu es tu*. The fifth staff continues: *me uy es tu Fi li us me uy me uy es tu es tu es tu*. The sixth staff continues: *Fi li uy me uy Fi li us me uy es tu es tu*. The seventh staff contains the word *Gode* written below the notes. The eighth staff is instrumental. The ninth and tenth staves are instrumental. The number *57. 73* is written below the first staff. The numbers *5*, *3*, and *6* are written below the ninth, tenth, and eleventh staves respectively.

e-go ho-die e-go ho-di e-ge-nui-te
e-go ho-di e-ge-nui-te
e-go ho-di e-ge-nui-te ho-die
e-go ho-di e-ge-nui-te

876543

con pittura

e — go ho di e genu i te Al — le lu ia Al — le

— nite ego ho di e genu i te Al — le lu ia

e — go e go ho di e genu i te Al —

e — go ho di e ho di e genu i te Al le lu ia

Grado

03333 4#

5 4 3 6 5

Handwritten musical score for a piece titled "Allegro". The score consists of ten staves. The first two staves are instrumental. The third through sixth staves contain vocal lines with the lyrics "Al-le-lu-ia Al-le-lu-ia Al-le-lu-ia". The seventh staff is labeled "Organo" and contains a single note. The eighth and ninth staves are empty. The tenth staff is instrumental, featuring a triplet of eighth notes and a triplet of sixteenth notes. The score is written in a cursive style with various musical notations such as notes, rests, and slurs.

Allegro

lu-ia Al-le-lu-ia Al-le-lu-ia Al-le-lu-ia

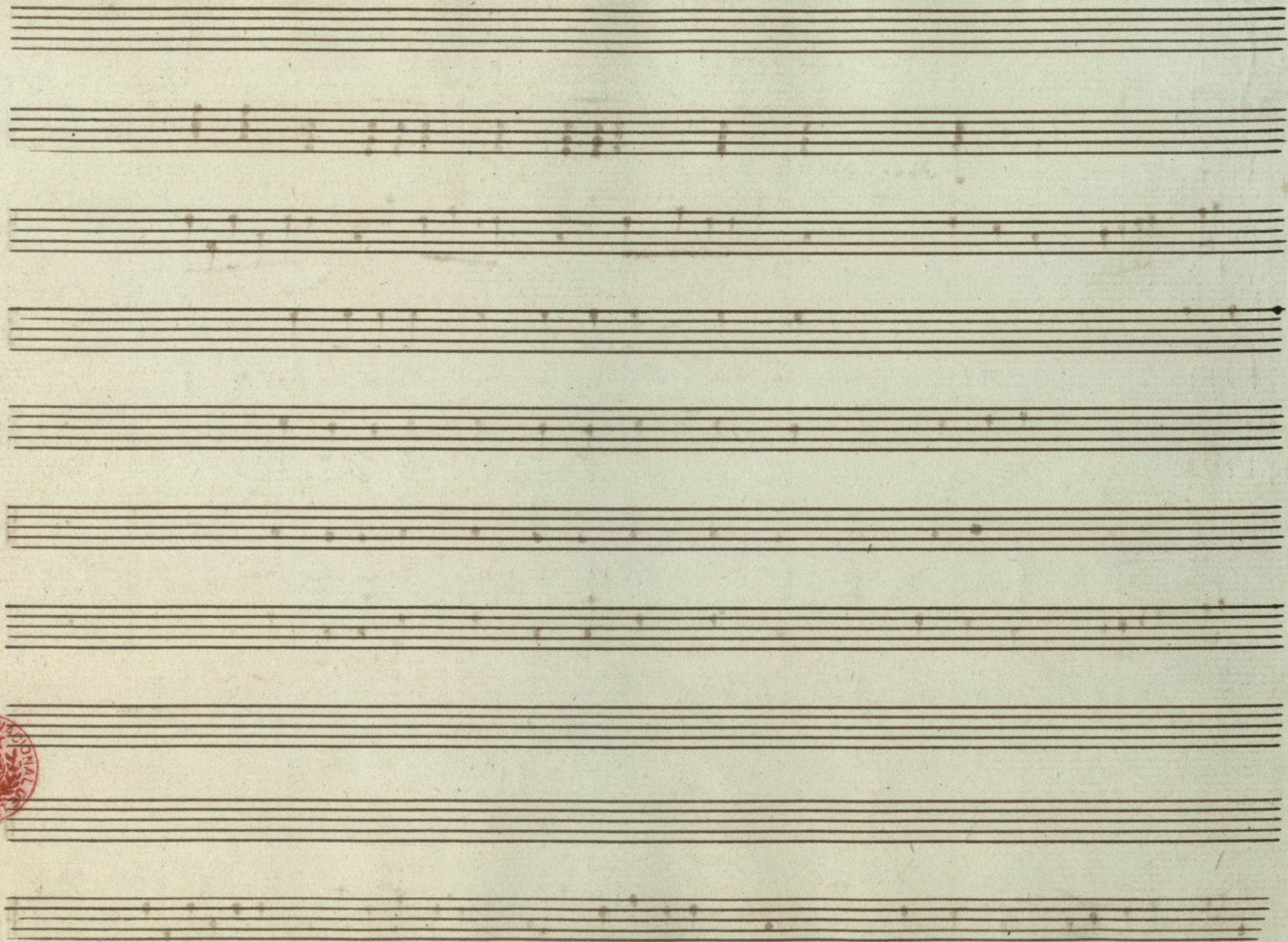
Al-le-lu-ia Al-le-lu-ia Al-le-lu-ia

le-lu-ia Al-le-lu-ia Al-le-lu-ia

Al-le-lu-ia Al-le-lu-ia Al-le-lu-ia

Organo

3 6 5 3 3



Gradual

Tiple Primo

[Large decorative flourish]

[Small handwritten mark]

[Handwritten signature]

Lytle Primo

And^e com mollo

Dole
Domi ny di xit ad me

Solo
Domi ny di xit ad me. Dixit ad me.

Fi li uy me-uy es tu. Fi li uy me-uy es

tu Fi li uy me uy me uy es tu es tu es

tu e go ho di e e go

e go ho di e e go

Solo
ho di e genu i te ge nui

te e go ho di e e go e go

ho di e genu i te. Do mi ny

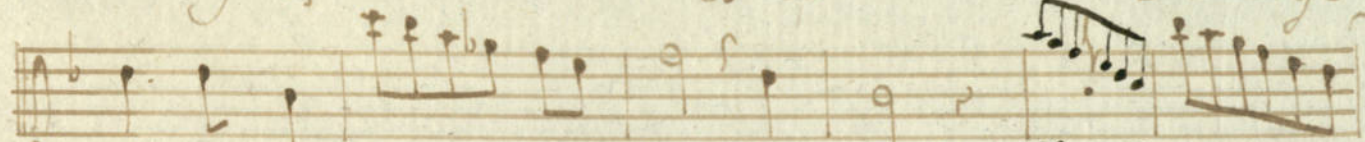
3^o duo
Filius meus



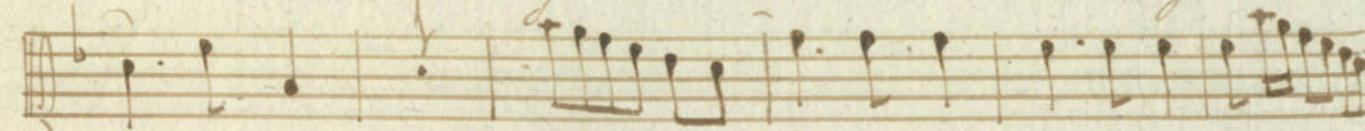
Dixit ad me Filius meus Filius



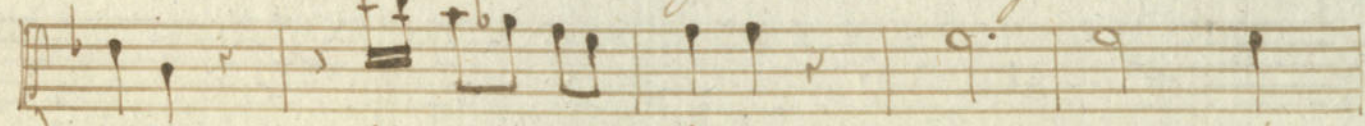
meus es tu es tu e — go



hodie e — go hodie ge —



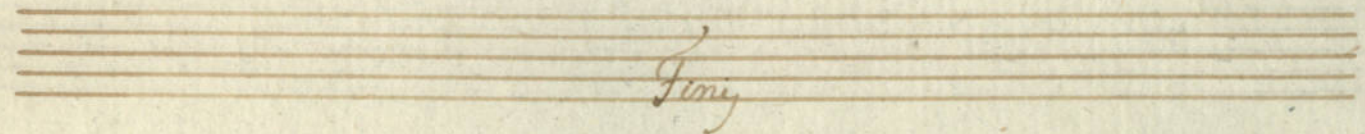
— nui te e — go hodie genui te Al — le



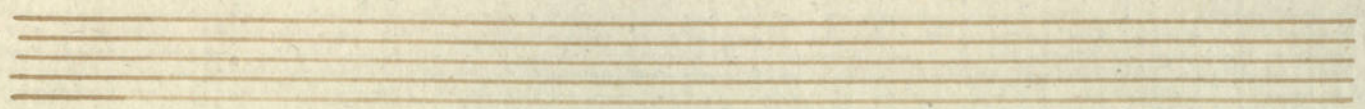
luia Al — le luia Al — le lu



ia Al le lu ia Alle lu ia ..



Fine





Graduat

Triple 1^o Rapieno



for 2^{te}



Handwritten signature or initials, possibly 'L. P. L.' or similar, written in dark ink.

Tiple 1^o Respiero

And^{te} con molto

Domi ney Dominey
dixit ad me. Fi li uy meuy meuy es
tu es tu e go ho
di e e go hodie genu i
te e go hodie ego e go
hodie genu i te. Do mi ney. dixit ad
me Fi li uy meuy. Fi li uy meuy es
tu es tu e go hodie
e go hodie ge nui te



e - go ho die ge nui te



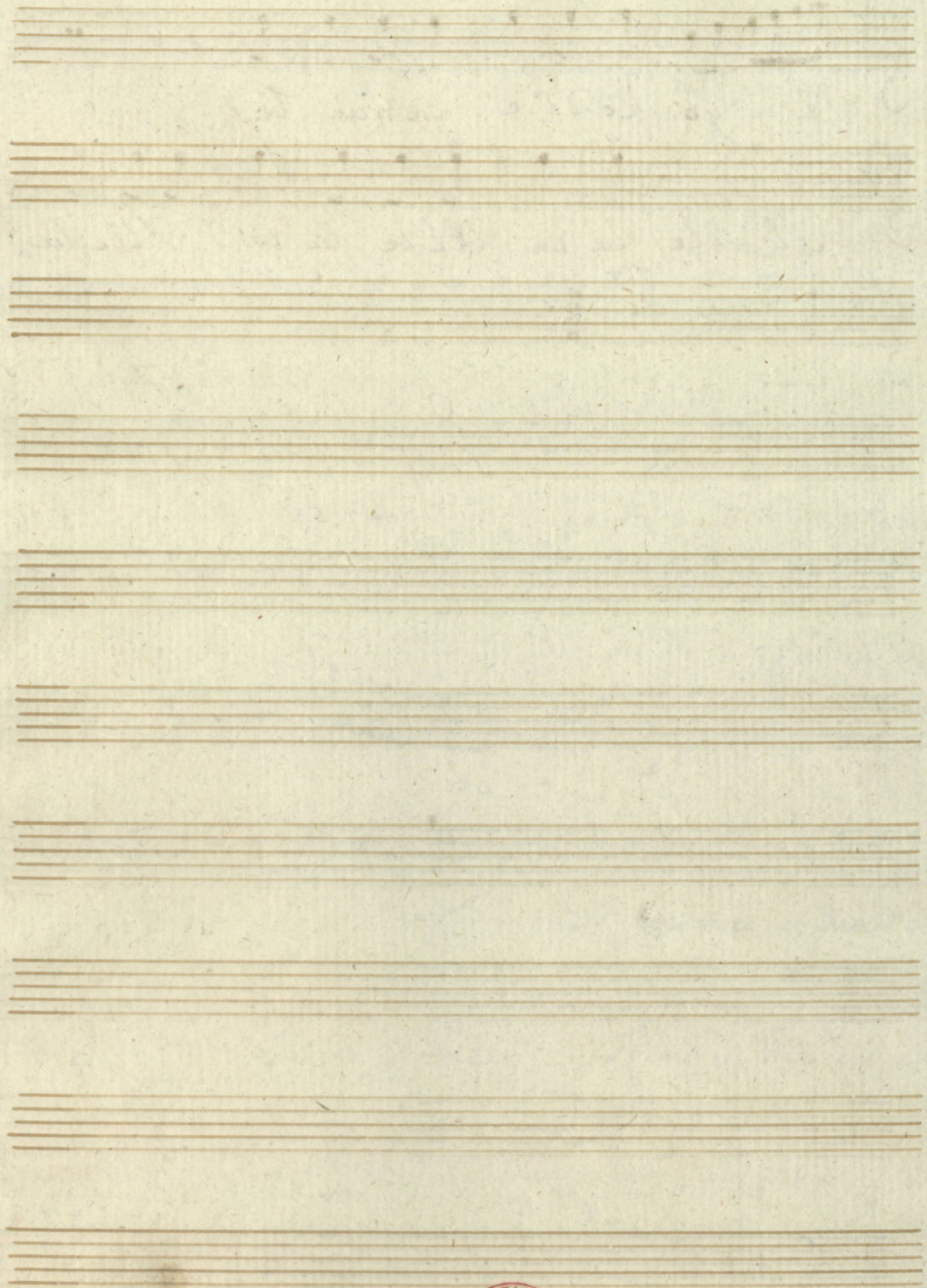
Al le lu ia Al le lu ia Alle lu



ia.

Fine





Gradual

Psalm 2^{do}

Psalm

4
1231

Tiple 2^{do}

Andante Com motto

f *Domi ny* *Domi ny*

f *Di* — *xit dixit ad me.* *Fi li uy me uy es*

f *tu* *Fi li uy meuy meuy es tu es tu es*

f *tu* *e go ho di e ho di e*

f *e go ho di e ho di e genui te*

f *e go ho di e ge — nuite e go*

f *ho di e genu i te Do — mi ny dixit ad*

f *me.* *Fi li uy me — uy es tu* *Fi li uy*

f *me uy es tu* *Fi li uy Fi li uy meuy es*

Solo *Duo*

Dole

tu es tu es tu e - go ho die
ho die ge - nu i te ge - nu i te
ego ho die ge nu i te Al - le
lu ia Al - le lu ia Alle lu
ia Alle lu ia.

Fini





Gradual

Parte 3.



parte

1231

Lyte 30

And Com motto

Dominus Dominus

Dixit dixit ad me Filius meus

filius meus es tu es tu

ego hodie ego hodie

ego hodie ego hodie

genui te ego hodie

ego ego hodie genui te Domi

nus Dixit ad me Filius meus es

tu Filius meus meus es tu es tu es

tu e go ho die e - go ho di

ie ge - nu ite ho die e - go

e go ho die e genu i te

Al - le lu ia Alle lu

ia Alle lu ia.

Finis





Gradual

Basso

[Handwritten flourish]

Fin

1231
9

Basso

And. Am. molto

Dominus Dominus

Di - xit dixit ad me Fi li uy meuy

Fi li uy meuy es tu es tu ego

ho die e ego hodie e e go hodie e

e go hodie genui te ego

hodie e e - go hodie hodie genui

te. Dominus dixit ad me.

Fi li uy meuy Fi li uy meuy es tu

es tu e go hodie

e go ho di e ge nui te e-go

ho di e ho di e ge nui te Al le lu

ia Al le lu ia Al le lu

ia Al le lu ia.

Finis



Gradual

1234
7

Organo Novo



Pr. Ste

Cheio

Ande Com o matto

flaute *Cheio*

Cheio *flaute* *Cheio* *flaute*

Cheio

flaute *Cheio* *flaute*

Chieio

BIBLIOTECA NACIONAL DE LISBOA

flaute

Chieio

flaute Chieio

Viva S

Handwritten musical notation, first system, treble and bass clefs.

Handwritten musical notation, second system, treble and bass clefs.

Alleluia

Handwritten musical notation, third system, treble and bass clefs.

Fine



Empty musical staves at the bottom of the page.

123A
8

Gradual

Organ Pequeno



Fin. Lte

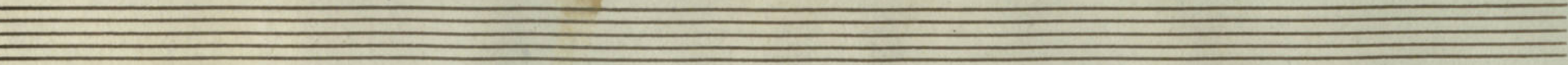
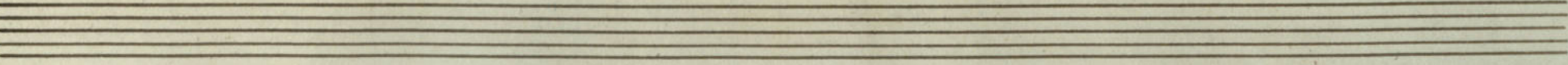
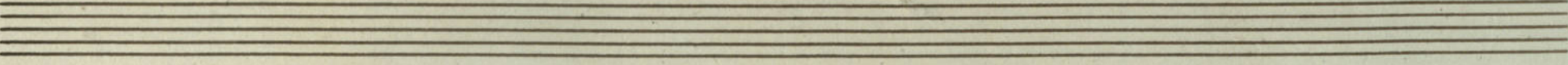
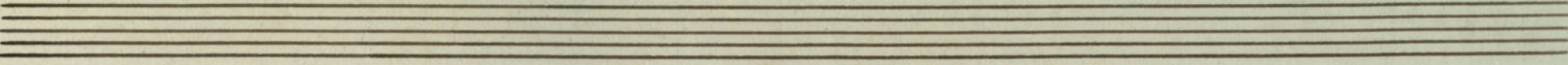
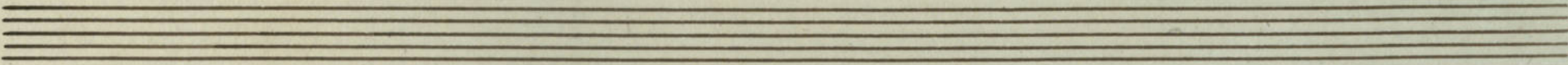
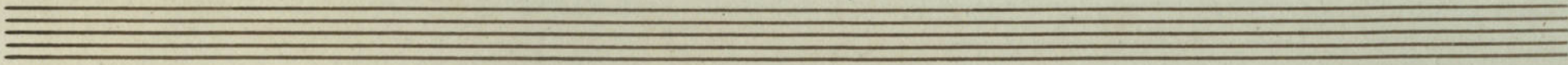
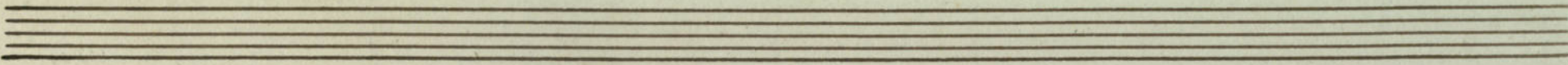
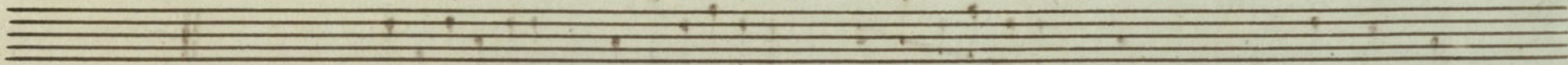
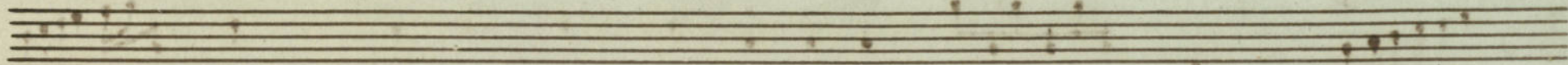
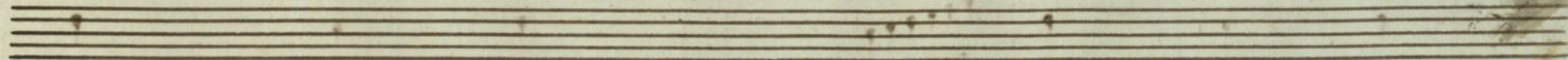
And^e Com^o matto $\text{B}\flat$ $\frac{3}{4}$

Handwritten musical score for a piece titled "Ande Como matto" in $\text{B}\flat$ major, $\frac{3}{4}$ time. The score consists of ten staves of music. The first staff begins with the tempo and key signature. The music features a variety of rhythmic patterns, including eighth and sixteenth notes, and rests. Fingerings are indicated by numbers 1-5 above notes. Dynamic markings include "unis" (unison) and "3" (triplets). There are also some handwritten annotations like "8 7" and "6 7" at the end of the first staff, and "6 5" and "6 5" at the end of the eighth staff. The notation includes slurs, accents, and various articulation marks.

Handwritten musical notation on three staves. The first staff contains a sequence of notes with a triplet of eighth notes marked with a '3' above it. The second staff begins with a triplet of eighth notes marked with '3 3 3 3 4' above them, followed by various notes and rests, including a triplet of eighth notes marked with '3' and a sixteenth note marked with '6' above it. The third staff continues the melodic line with various notes and rests, ending with a double bar line. The notation includes various note values, rests, and articulation marks.

876543

Finis



Gradual

1234
9

Orgão Grande



Sixta

Air de com motta

Handwritten musical score for the first system. It consists of two staves: a treble clef staff on top and a bass clef staff on the bottom. The time signature is 3/4. The key signature has one flat (B-flat). The music begins with a treble clef staff containing a series of eighth notes and quarter notes, with a 'tr' (trill) marking above the final note. The bass clef staff contains a similar melodic line. A large '2' is written at the end of the system, indicating a second ending.

Handwritten musical score for the second system. It consists of two staves: a treble clef staff on top and a bass clef staff on the bottom. The music continues with various rhythmic patterns, including eighth and sixteenth notes. There are several 'tr' markings above notes in the treble staff. A large '2' is written at the end of the system.

Handwritten musical score for the third system. It consists of two staves: a treble clef staff on top and a bass clef staff on the bottom. The treble staff features a series of chords and single notes, while the bass staff has a more active melodic line with eighth and sixteenth notes. A large '2' is written at the end of the system.

Handwritten musical score for the fourth system. It consists of two staves: a treble clef staff on top and a bass clef staff on the bottom. The treble staff contains a series of chords, some with 'tr' markings. The bass staff has a melodic line with eighth and sixteenth notes. A large '2' is written at the end of the system.

Handwritten musical score for the fifth system. It consists of two staves: a treble clef staff on top and a bass clef staff on the bottom. The music concludes with a series of chords and a final melodic phrase. A large '2' is written at the end of the system.

A handwritten musical score consisting of eight systems of two staves each. The notation is in a single system with a treble and bass clef. The music features a variety of rhythmic values, including eighth and sixteenth notes, and rests. There are several instances of beamed eighth notes and sixteenth notes, suggesting a lively tempo. The score concludes with a double bar line and a fermata on the final notes of both staves. The word "Pabeta" is written in cursive in the middle of the fifth system, and "Finij" is written in cursive at the end of the eighth system.

Pabeta

Finij

A handwritten musical score on ten staves. The notation is sparse, consisting of vertical stems and dots representing notes. The first staff contains several vertical stems. The second staff has a series of notes connected by a line. The third staff shows a sequence of notes with a line underneath. The fourth staff has a few notes and a line. The fifth staff contains notes and a line. The sixth staff has notes and a line. The seventh staff shows notes and a line. The eighth staff has notes and a line. The ninth and tenth staves are empty.

1231
/ 10

Gradual do Natal

Orgão



S. Leite

Ande Con motto

A handwritten musical score for piano and violin. The score is written on ten staves. The first two staves are for the violin, with a treble clef and a 3/4 time signature. The tempo is marked "Ande Con motto". The next two staves are for the piano, with a bass clef and a 3/4 time signature. The score includes various musical notations such as notes, rests, and ornaments. There are several fingerings indicated by numbers 1-5. A red circular stamp is visible on the left side of the page, partially overlapping the piano part. The stamp contains the text "BIBLIOTECA NACIONAL DE ESPAÑA" and "MADRID".



Handwritten musical notation for the first system, featuring a grand staff with treble and bass clefs. The bass line contains several chords and a melodic line with fingerings 7, 3b, 7, and 7b. The treble line contains chords and rests.

Handwritten musical notation for the second system, featuring a grand staff. The bass line has a melodic line with a fingering of 6 and a series of chords. The treble line has a melodic line with a fingering of 9 and a series of chords.

Handwritten musical notation for the third system, featuring a grand staff. The bass line has a melodic line with fingerings 6, 5, 6, 5, 5, 7 and a series of chords. The treble line has a melodic line with a fingering of 9 and a series of chords.

Handwritten musical notation for the fourth system, featuring a grand staff. The bass line has a melodic line with fingerings 5, 7, 7, 6 and a series of chords. The treble line has a melodic line with a fingering of 9 and a series of chords.

Handwritten musical notation for the fifth system, featuring a grand staff. The bass line has a melodic line with a fingering of 9 and a series of chords. The treble line has a melodic line with a fingering of 9 and a series of chords.

Vire Subito

Handwritten musical score for piano, consisting of six systems of two staves each. The notation includes various rhythmic values, accidentals, and some sections with diagonal hatching. The paper shows signs of age and staining.



Faint handwritten musical notation on several empty staves at the bottom of the page. The notes are light and difficult to read, appearing as ghostly impressions of the original score.