

no 20

*Allegretto.*

*Hymno do 1.º Vespere, de S. Vicente de Paulo.*

*Orig. de Fr. P. Marquez.*

F.C.R. ms  
198.14  
FER 198/14

Triplo *f:*  
 Alto *f:*  
 Tenor *f:*  
 Barro *f:*

Qui mu ta re so let qui mu ta re so let gran di bus in fi ma bon nes  
 Qui mu ta re qui mu ta re so let gran di bus in fi ma bon nes  
 Qui mu ta re so let gran di bus in fi ma bon nes  
 Qui mu ta re so let gran di bus in fi ma bon nes

con nes ex tu tu po rang maxi mus om ni um Vin cen ti tera ente De us  
 nes ex tu tu po rang maxi mus om ni um Vin cen ti tera ente De us  
 tu po rang maxi mus om ni um Vin cen ti tera ente De us  
 nes ex tu tu po rang maxi mus om ni um Vin cen ti tera ente De us

ex tu li ca li ca ti bus ca li ca ti bus in sa rang.  
 ex tu li ca li ca ti bus ca li ca ti bus in sa rang.  
 ex tu li ca li ca ti bus ca li ca ti bus in sa rang.  
 ex tu li ca li ca ti bus ca li ca ti bus in sa rang.

*Segue = Coro.*

*Coro.*

vi lis sub tu guri ter mi ne ray ce ris *Allegro*  
 breves te com ple xa ti si mus proa si di und si  
 pe ri ay pa rat.

*Segue*

*Soprano*  
*Alto*  
*Tenor*  
*Basso*

Ut inquit mi seris se rre sui ag sum Du ry her pa te

pa te ry ser vi ti i vi ce y sed te dum fi de i sub dit ha rum ju go sol vit

*Com*

pa det sol vit com pa det ve ri ty.

Segue = o Coro

*Coro*

no ope ru hu ce pa ty tu y spij ti spon sa mi ter

aur get po pu lis fi dy.

Segue

Terzetto.

Mod. sostenuto.

Tiple

Alto

Tenor.

De mon ta nus i nos ca ger

or pha nus et or pha nus De plos to ta va um

In re vo cat Pa trem

Sanctus  
 Sanctus a des cor po ra sub le vas men  
 tus a des cor po ra sub le vas men  
 Cum ctis la tus a des cor po ra sub le vas men

tes con ci li ay con ci li ay De o con ci li ay De  
 ci li ay con ci li ay De o con ci li ay De  
 tes con ci li ay con ci li ay De o con ci li ay De

Segue o Coro  
 Ragum con si li ay ju sus a des sa cry men tis  
 cer ta tu e hu mi na con sul tiat de nil tan gi ho no rat mi se rat  
 pe re qui mo ni ty ju vaj segue

# Canon.

*Alleg. to*

*Soprano*

*Alto*

*Tenor*

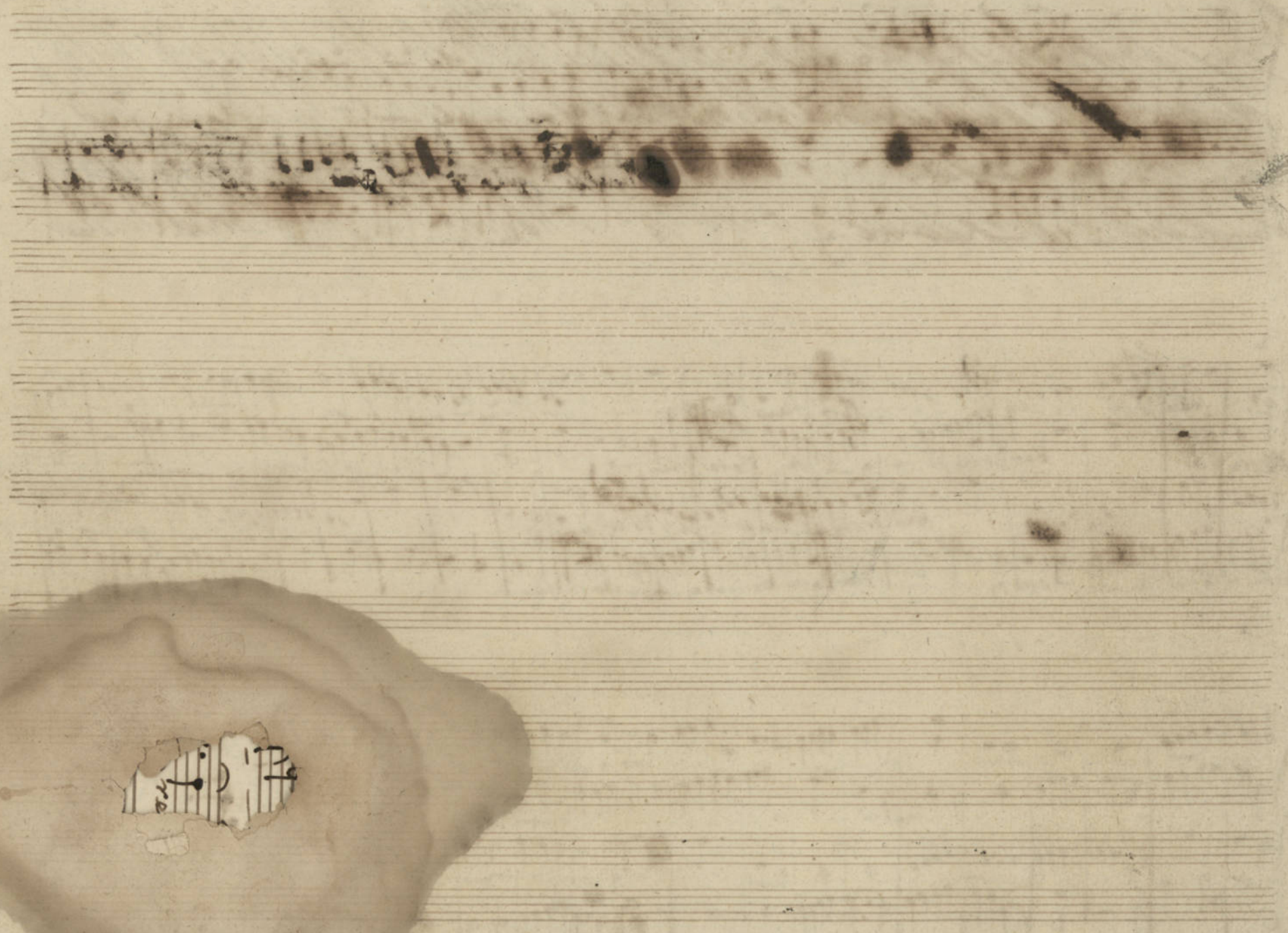
*Basso*

Quem se ctum i no pes quem se ctum i no pes  
 Quem se ctum i no pes quem se ctum i no pes  
 Quem se ctum i no pes  
 Quem

quem se ctum i no pes quem se ctum i no pes Ma xi ma xi Pa  
 quem se ctum i no pes quem se ctum i no pes Ma xi  
 quem se ctum i no pes quem se ctum i no pes  
 quem se ctum i no pes quem se ctum i no pes quem se









Hymno de 1.º Vesp. de S. Vicente de Paulo. Orig. de S. Francisco de Assis.

Allegretto.

Soprano 2  
Qui mu-ta-re so-le-t qui mu-ta-re so-le-t gra-ti-as in fi-

Alto 2  
Qui mu-ta-re qui-mu-ta-re so-le-t gra-ti-as in fi-

Tenor 2  
Qui mu-ta-re so-le-t gra-ti-as in fi-

Basso 2  
Qui mu-ta-re so-le-t gra-ti-as in fi-

ma om-ni-um ex-cel-si-pe-ri-um ma-xi-mum om-ni-um Vin-centi-

ma om-ni-um ex-cel-si-pe-ri-um

Qui su-per na-mu-ra pa-tri-ae su-per-ve-ni-ple-ni-ae bi-bi-ty-licae ne-ven-ti-tu-

rum vo-ta prae-ge-n-tis di-en-tis

Handwritten musical notation for the first system of the lower section.

Qui vel in-fan-ty-licis pro-stanti-um tran-si-tu-um Divi-ty-ty bi-ty-ty offert-um

propria prati

Handwritten musical score on five staves. The notation includes various notes, rests, and clefs. There are several instances of heavy black ink scribbles obscuring parts of the music, particularly in the second and fourth staves. A large number '100' is written at the top left. A '2' is written below the second staff. The music appears to be a complex composition with multiple voices or instruments.

Handwritten musical score on five staves. The notation is dense and includes many notes, some with stems and beams. There are some corrections or erasures visible in the lower staves. The music continues from the previous system.

Handwritten musical score on five staves. The notation includes notes, rests, and clefs. A large number '2' is written below the second staff. The music continues from the previous system.

Tiple.

*Allegro*  $\text{3/8}$  *f.*  
 28  
 Qui mu-ta-re so-lu-ti-gra-di-bus in-fi-ma - gn-di-bus in-fi-  
 ni-tum rex om-ni-um rex su-pe-rum, ma-xi-mum om-ni-um vin-centi-  
 sum-mum da-my-na-tu-li-ta-ti-ce-ti-bus cae-li -  
 ter-re-que in-se-rum. *Segue o Coro; Segue =*

*Allegro*  $\text{3/8}$   
 29  
 li-um. - - - - - Pe-tru-m rex-heu-ra-te-ri-um vi-ti-i-vi-cij  
 sed-te-dei si-de-i sub-di-ctum, ju-dex sol-vit com-  
 sol-vit com-pa-dat ve-ri-ta-tem. *Verbo doloso; segue =*

*Forca 3. Mo. Sostenuto*  
 30  
 te-mo-ni-a - - - - - rum i-nops-  
 -a-gar et or-pha-ni et or-pha-ni te-ple-  
 -to-ta in-um, ju-re vo-cat Pa-  
 -trum cum di-ctis la-tus la-  
 -day Cor-po-ra Cor-po-ra sub-ble-vas men-  
 -tes con-ci-li-um con-ci-li-um

*Verbo doloso; segue =*  
 31  
 De - - - - -

Canon.

*Allig. to*

Qua - ste dum ino - pe - que - ste et i - no - pas  
que - ste - dum i - no - pe - ma - ri -  
ma - luy Pa - tri a - grij un - de Sa - lus  
a - grij un - de Sa - lus ma -  
ri - ma - ri - ti - blan - do qui re - cre -  
at - blan - do qui re - cre - as  
Blan - do qui re - cre - as  
ito - ra - flam - me - par - te - laus - ti - bi - laus  
ti - bi - pi - ri - tus a -  
me - a - me - a - me - a  
me - a

Alto.

*Alleg.* *Alto* *3/2*  
 Sei mi ta re qui mi ta re so - let gra de des  
 in fi ma om - ny ex sup re rny - maxi my om ni  
 um Vin cen ti tes sen te De us ex tu lit ca ti  
 ca ti bus ca ti bus in - se rny. *Verso do Coro =*  
*Segue*

*Alleg.* *Alto*  
 U pro pta mi ser y se - re si ay  
 pu si ay pu si ay Du ray heu  
 pa te ry ser vi tu i vi cy sad ta du se - del  
 i sub dit he - ru su - go tot vit  
 Com pe det tot vit Com pe det ve - ri ty *Verso do Coro,*  
*Segue*

*Alleg. Mod.* *Alto*  
 se mon ta - - - - - ny  
 i no pu a - ger et or - - - - - pha  
 ny de pha - to ta - - - - - su a ju re bo  
 - - - - - trem can ti ba ty des  
 Cor po ra su ble ves men - to con ci li ay  
 - con ci li ay Deo con ci li ay De - o. *Verso do Coro =*  
*Segue*

# Canon.

*Allegro*

Quaerite stum in pes  
que stum i re pas quem  
stum i re pas ma xi  
ma laus Pa tri e gris un de  
sa laus e gris un de sa  
laus ma ai ma fi li  
blan do qui re cre a blan  
do qui re cre a  
blan do qui re cre a pe  
tro re stans ne per si ta laus  
ti bi laus ti bi ri tus  
a i ri men  
a me men



Tenor

*Alleg.*  $\text{3/2}$   $\text{2}$

Qui in tu - ra - so - let gra - ti - bus in - fi -  
 nis om - ni - bus sa - pa - rum - ma - xi - mus om - ni - u - vin - con - ti -  
 ta - men - ta De - us ex - tu - lit ca - li - ca - ti -  
 bus ca - li - ca - ti - bus in - sa - rum. *Verso do coro, et segue =*

*Alleg.*  $\text{3/2}$   $\text{2}$

Ut pro - pter mi - seris - sa - ra - sci - ad  
 o - pa - dum he - pa - te - ris ter - ti - i - vi - cy  
 des - ce - de - si - de - i - sub - di - ta - rum su -  
 go - sol - vit com - pe - det - sol - vit com - pe - det ve - ri - ty *Verso do -  
 coro, et segue =*

*Verso a 3.* *Mod.*  $\text{3/4}$  *p:*

Te - mon - ta - nus  
 i - nos - a - ger et or - pha - nus  
 te - ple - ber - to - ta - su - um  
 ju - re - vo - cat - vo - cat - Pa - trem Cum -  
 sty - ba - tus a - de - y Cor - pora - sub - le - vay  
 men - tis don - ci - li - ay con - ci - li - ay  
 De - o - con - ci - li - ay De - o

*V. Do Coro, et segue =*

Canon.

*Alleg.* 4/4

Quem haec tuus ino pes  
- quem haec tuus ino pes quem haec  
- tum i no pes ma ri  
ma laus Pa tri a - gris un de  
la lus a gris un de ca  
lus ma ai ma fi li  
Blan do qui re cre a - blan  
do qui re cre a -  
- do qui re cre a -  
- do ra - ta mi ne par  
- te laus te bi laus ti bi qui ri  
- tus a -  
- men a me a men a  
- men A I - men.



Alleg.<sup>to</sup>

Baro.

(FER 198/14)

Quimus tunc deus grati bus in fi  
 me om - nes ex sua pe - rans - maximus om ni  
 um vin - cum ti - tem - er - te Deus ex tu  
 lip ca - li ca - li ca - ti bus - in ser - vus.

Versado -  
Coro; Depois  
Segue

Alleg.<sup>to</sup>  
 ut pro - pter mi - seris Je - su - x - opem  
 De - us rex - ce - lestis in - vici - sed tu - dum - fidei sub - dit  
 he - ru - iugo - vit - co - pedet - ve - si - ton

Versado Coro; Depois V. Face F; Depois V. Doloro; Depois segue

Canon. Alleg.<sup>to</sup>  
 que - flectu - ino - pes  
 - que - flectu - i - no - pes que - flectu - atum -  
 no - pes - ma - xi - ma - laus Pa - tri a - gris  
 un - de laus a - gris un - de la -  
 lus ma - xi - ma - fi - li - o - blan -  
 do qui re - cre - at - blan - do qui re - cre - at  
 pe - to - re - flami - ne

par sis laus ti bi laus ti bi qui ri  
ty a  
me a me a men a men a  
men.

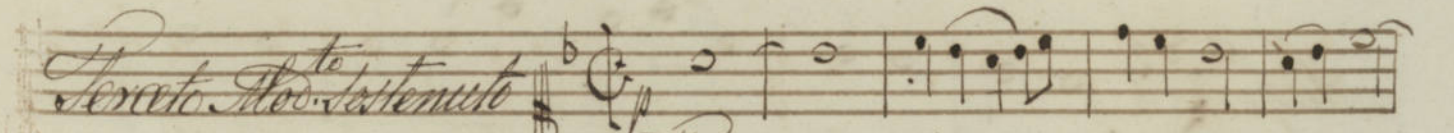


Com-<sup>mu</sup>ni-<sup>ca</sup>ti-<sup>o</sup>nis



Coro

*Andante* *Allegro* *Andante*  
De mon ta — nus i — no —



— e gre et or — pha — nus et or — pha — nus



plebs — to — ta — suum ju — re vo — cat Pa —



— trum, Cunctis be — tis a



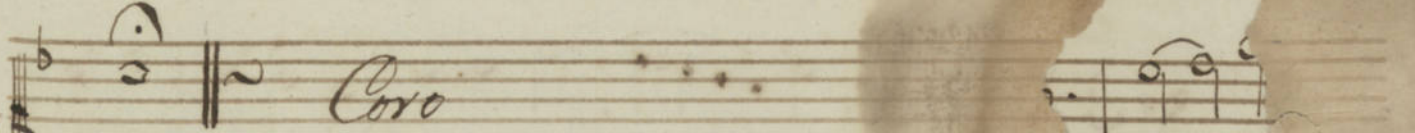
des corpo — ra corpo — ra — suble — vas Men — tis con



ci — lias — — con — ci — lias De —



Coro



*Allegro* *Canon.*  
Quem fle — ctum i — no — pes — quem fle — ctum



i — no — pes quem fle — ctum i — no



Alto

Hymnus Prim. Vesperas de S. Fronte de Paulo

*Alto*  
*Moz.*

Qui mu-ta re qui-mu-ta-re so-lut  
 grandibus in fi-me Om-nis ex-superans-  
 ma-ximus om-ni-um Vin-cen-ti-ten-ue-m-te De-us ex-tu-  
 lit Ca-li-ce te-bus ce-li co-ti-bus in-  
 -pe-re-ns

Coro

*Alto*  
*Moz.*

Ut pro-mptam mi-se-ri-si-fe-me-si-as  
 o-m-ni-um Du-ras heu pa-te-ri-s-ter-  
 vi-ti-vi-as sed te dum fi-de-i sub-let he-rum  
 Ju-go solvit com-pe-let

Sol-vit com-pedat ve - ri-tas

Coro

*Andante* *Molto* *Andante* *Molto* De - i - mon - ta - - - - - nus

e - no - pi - e - - - - - ger et - or - - - - - pha - nus

De plebs - to ta - suum ju - re vo - - - - - cat

Pa - - - - - trum Cunctis la - tus a - des Cor - po

ra sub - te vas Men - tes con - ci - ti - as - con - ci - ti - as

De con - ci - ti - as De - - - - - o.

Coro

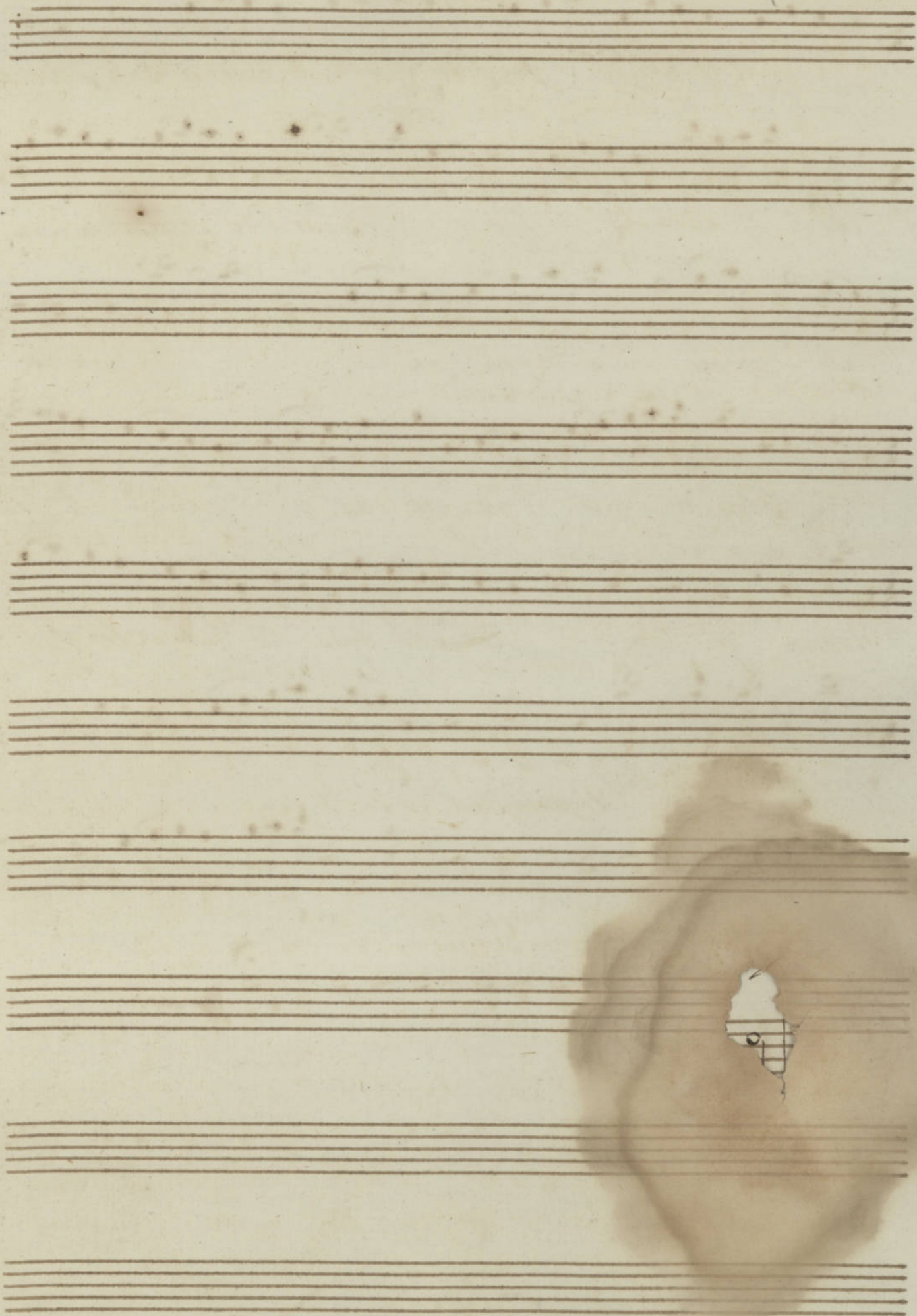
*Canon* *Alleg.* *Molto* Quem flectum i - no - pes - quem

i - no - pes quem flectum i - no - pes

ma - - - - - xi - no - laus Pa - tri - e - - - - - gris un - de

sa lus e gris un de sa — — — sus  
ma — xima Fi li o — blan — do qui re cre  
as — blan — do — qui — re — — — — — cre as  
— blan do qui re cre as — pe — eto ra  
sta mi re par sit laus ti bi laus ti bi  
Spi — ri tus A — — — — —  
— — — — — men A — — — — —  
— — — — — men

Fines

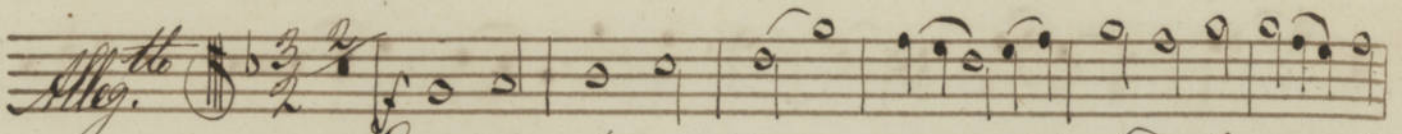




Tenor

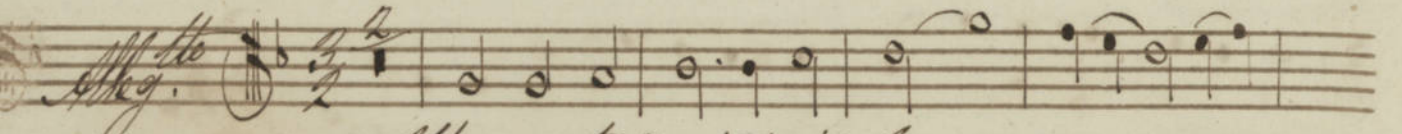
(FER 198/14)

Hymno de Bim. Vespuras de S. Vicente de Paulo

*Alleg.* 

Quimū ta - re - so - let grandibus in fi -  
 ma Om - nis ex su - perans - ma ximus omni - um - Ven -  
 cante te - nu - en - te De - - - us ex tu lit Coe - li ce - ti -  
 bus coe - li ca - ti bus in - - - fe - rens

*Coro*

*Alleg.* 

Ut promptam mi - se ris fe - - - rre  
 sci - as o - - - peno Deus heu - pa - te ris ser vi ti i  
 vi as Deo dum fi de i subdit he - - - rum  
 ju go sol vit com pe de - sol vit com pe de ve -  
 - - si tas.

*Coro*

*Secreto. Solo. Sustainuto.*  
Te mon ta - - - nus

i - no - ps - a - gre et or - - - - - iha nus -

Te - plebs - to ta - suum ju re vo cat

vo cat Pa - trem Cum - ctis letus a - -

- des cor - pora suble vas Mem tes con ci ti

as con ci ti as De - o con ci ti as De o

*Alleg. Canon.*  
Quum fle ctum i no pes - quem fle ctum

i - no pes quem fle - - - ctum i - no

pes - ma xi ma laus Pa - tri & - gris

un de sa lus & gris un de sa - - -



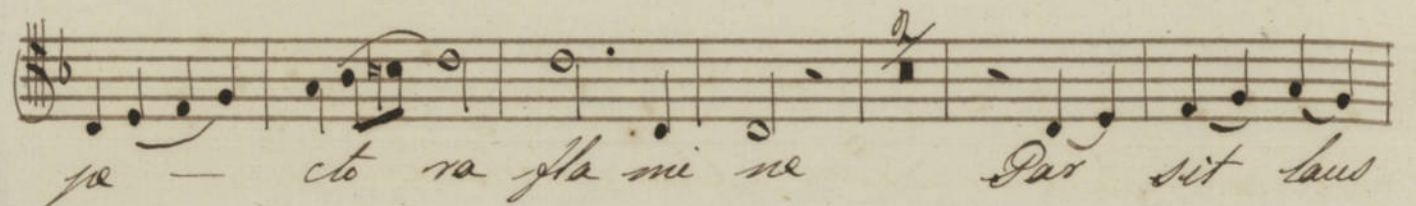
sus ma - xima fi li o - blan - do qui



re cre as Man - do qui re



- cre as blando - qui re cre as



re - cto ra gla mi re Per sit laus



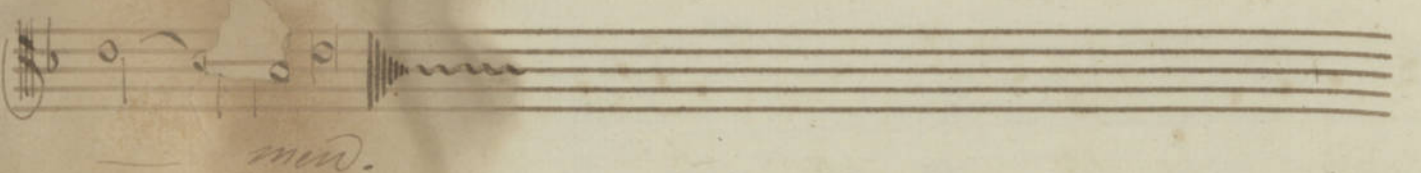
ti bi laus ti bi spi - ri tus



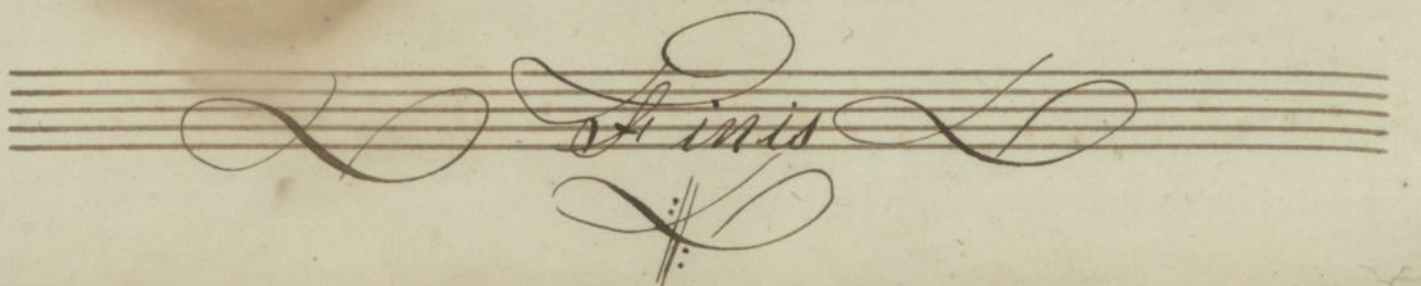
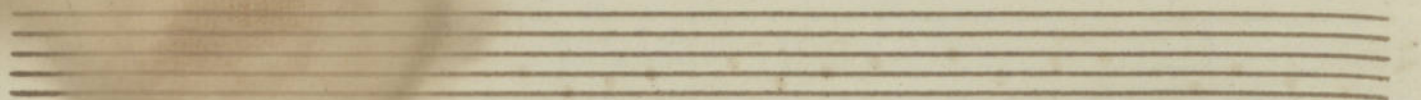
- - - - - men



A men A men A - men A



- - - - - men.

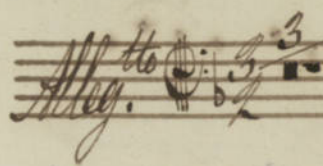


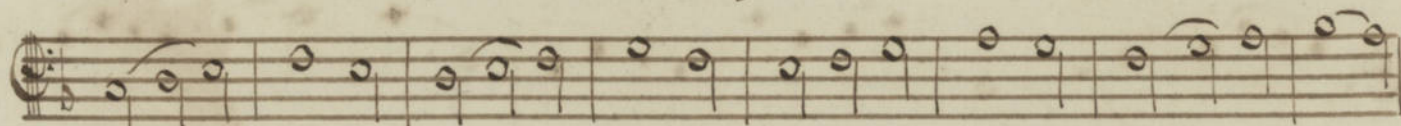
Finis

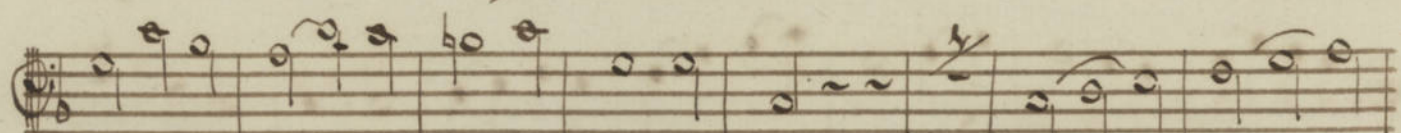
This image shows ten horizontal musical staves, each consisting of five lines. The staves are arranged vertically and contain handwritten musical notation. The notation includes various note heads, stems, and beams, though the handwriting is somewhat faint and difficult to read. The paper is aged and shows signs of wear, including a large, irregular brown stain on the right side that overlaps the lower staves. The overall appearance is that of a handwritten musical score on aged paper.

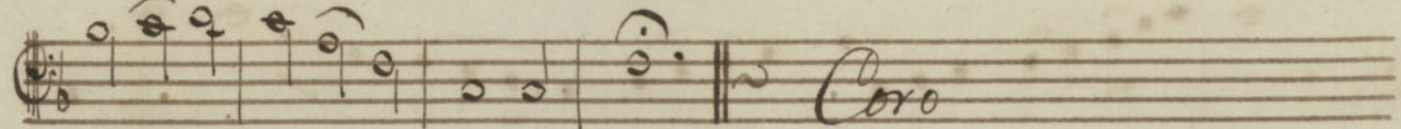
Basso

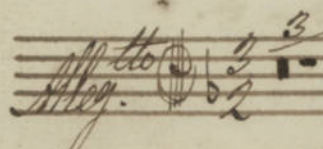
Hymno chor. Prim. Responsus de S. Vincente de Paulo

*Alleg. to*  *Quimus te re so let gran di bus in fi na*

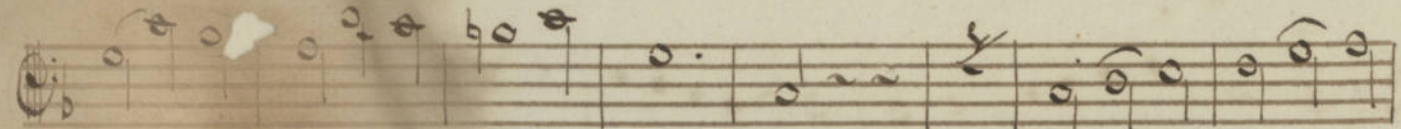
 *Om nes ex su pe rans ma ximus om ni um Vin cen*

 *ti te um om te De us ex tu lit Ca li ca li*

 *ca ti bus in fe nus* **Coro**

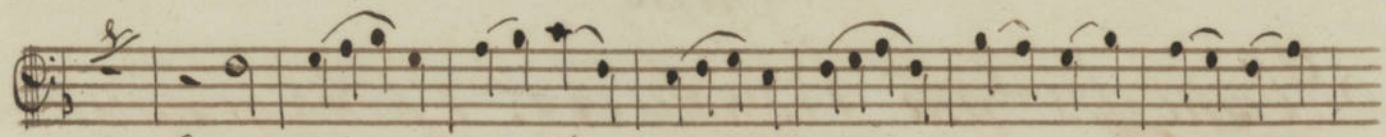
*Alleg. to*  *Ut promp tam mi se ris fe re sci as o pum*

 *Du ras heu pa te ris ser vi ti i vi as sed te di fi de i*

 *sub dit he rum ju go sol vit*

 *com pa de ve ri tas.* **Coro, Ferate tacit**

*Canon*  
*Alleg. to*  *Quem ste ctum in opus quem spectum i no pus*



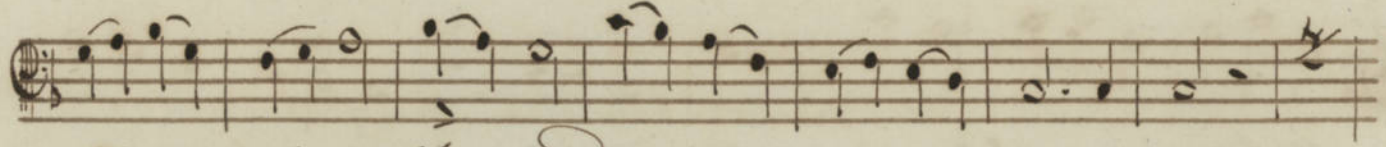
*Quum sit — et unum i no bis ma xi ma laus*



*Pa — tri — gnis un de sa lus a gnis un de sa —*



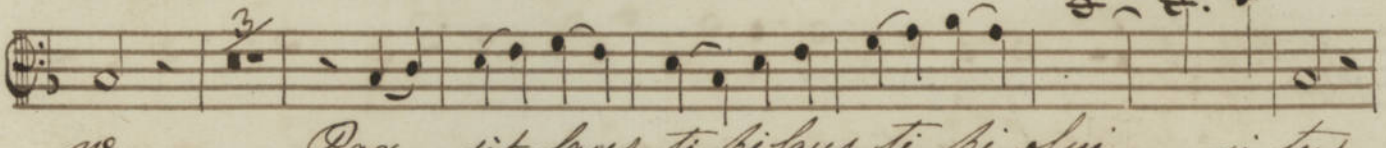
*— lus ma — xima fi li o blan — do qui*



*re cre as — blan — do qui re — — cre as*



*blan do qui re cre as — pe — — eto ra fla mi*



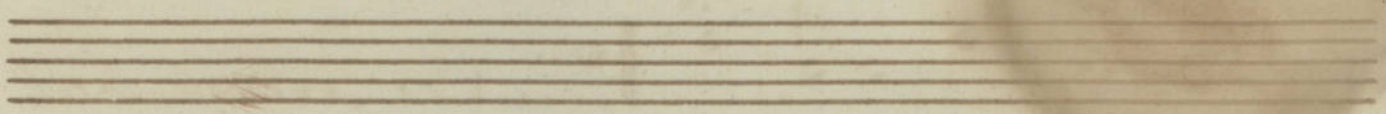
*re Par sit laus ti — bi laus ti bi Spi — ri tus*



*A — — — — — men A*



*men A men A — men A — — — — — men.*



*Finis*