

MARIANNE BAILLIE
ORIGINAL SKETCHES
OF PORTUGUESE
COSTUME

1821-23



3230

4.01500

~~254~~

~~810.714~~
282

~~Q~~

Microfilm edo

17-6-2000

Contents.

- Peasant of the neighbourhood of Cintra. no 1. +
an old Peasant of Cintra. no 2. +
Portuguese scenery. Ladies in Spanish dresses. 3 +
An old Peasant of Cintra, with a water pichon. 4. +
an Inhabitant of Lisbon. - 5. - +
a Peasant girl of Cintra, going to Mass. - 6. -
a Fidalgo. - drawn at Cintra from nature. by signor
Lomonts. 7. +
a Fisherman's wife, of Pasa d'Arco. - 8. +
Lisbon Street musicians. - 9. - +
Portuguese scenery, in the neighbourhood of Cintra. - 10. +
Fisherman & his family. near Pedrocas. - 11. +
a Monk of San Francisco. - drawn from nature by W. White 12 +
a Portuguese Wagon. - 13. +
a Portuguese Muletier - 14. +
a Capucine Monk, and a young Peasant of Cintra. 15. +
a young Friar of the Trinitade Convent, near Cintra. 16. +
a young peasant of Cintra. 17. +
Peasants of Cintra. 18. +
a Friar and a Priest, near Lisbon - 19. +
a Man, and scholars of the Convent of Salesias - near Belem. 20. +
a Lady of Lisbon going to Mass, with her female servants - 21. +

Costumes in
Portugal.

1821 and 1822. & 1823.

drawn from Nature.

by Marianne Baillie.



7201



A Peasant of the neighbourhood
of Cintra. - M.A. 1823

na2



an old peasant of Cintra na2





Portuguese. Sunday. - Ladies in Spanish dresses.

Mar 1821





an old Peasant of Cistia - M.B.

204



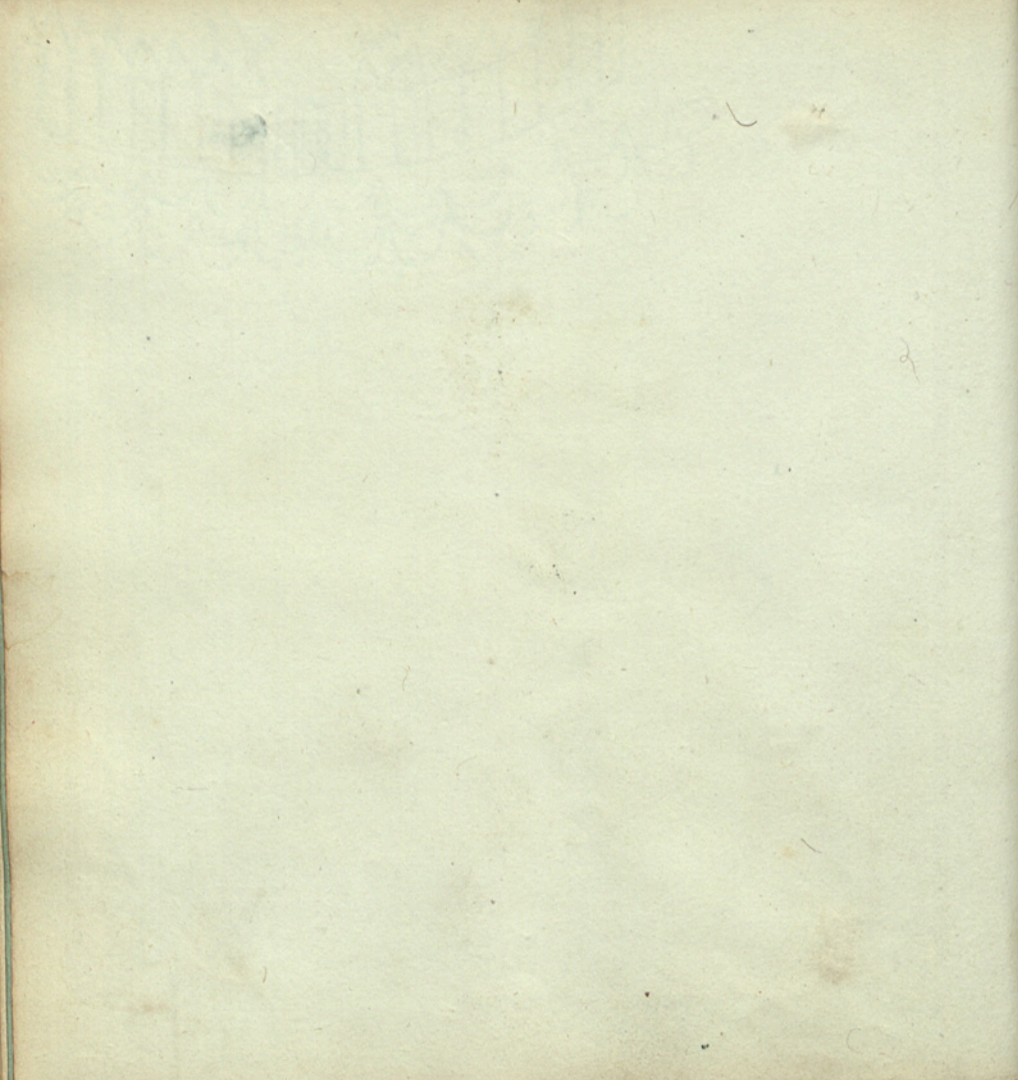


an Inhabitant of Lisbon.

Ms. B. 1. 821. no. 5



no 6





drawn by Sig. S. ...

a. Fidalgo.

Entre 1871





a Fishermans Wife of Capo d'Arco.

M^o 1821





Lisbon Street Musicians

1822





Portuguese Scenery. in the neighbourhood
of Civita - 1891. M.B.





a Fisherman and his Family in the
 neighbourhood of Pedregal. -
 1823.

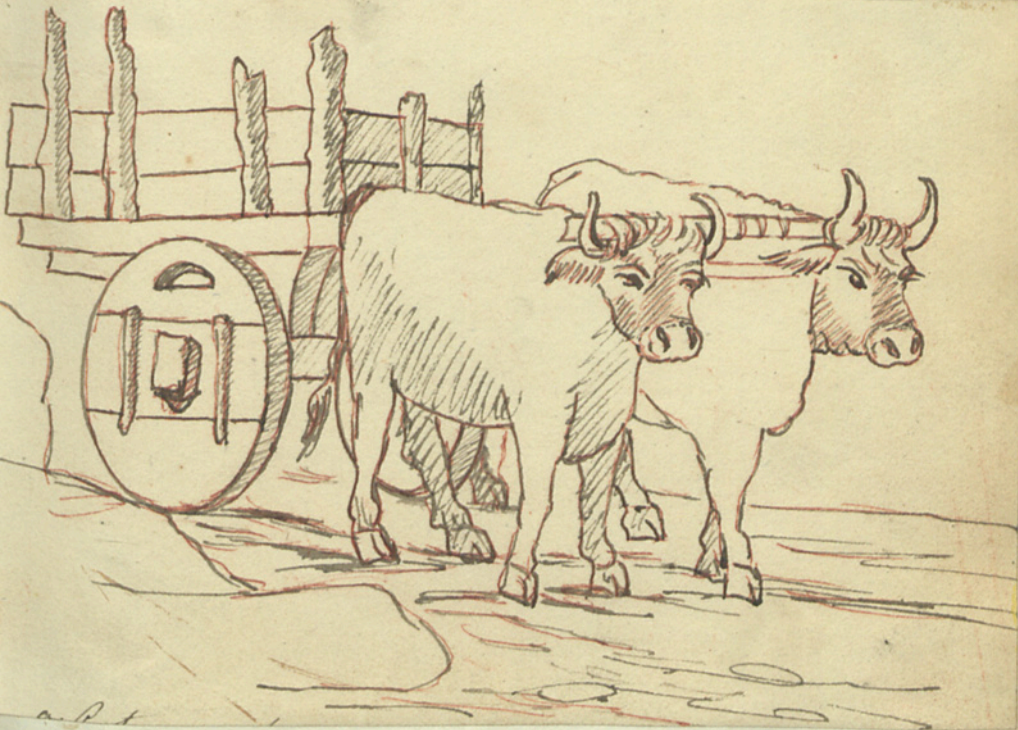




A monk of the order of St. Francis, who walked in the procession
of Corpus Christi in the year 1822

M^{rs} White.





a. Portuguese Wagon. - (copied 7/1/03)





A Portuguese Muleteer. Cintra. MS. 1821





- Capucin & Peasant
Hinter. Nov. 1821



no 16



A Friar of Trinitada. near Cintra. M.B. 1521



no 17

Mina Crichton
herself



a young Peasant of Cintra in Portugal. 1821 MCB



no 19



A Friar and a Priest, in the
vicinity of Lisbon. M.B. - 1823.





a Nun of the Convent of Salesias.

*Near Belim in
Portugal.*

1917



21.



a Lady of Lisbon going to Mass, attended by her
female domestics. mcb.





Indra Beggars, receiving their daily dole of
Soup, at the door of the Hotel - 1836.



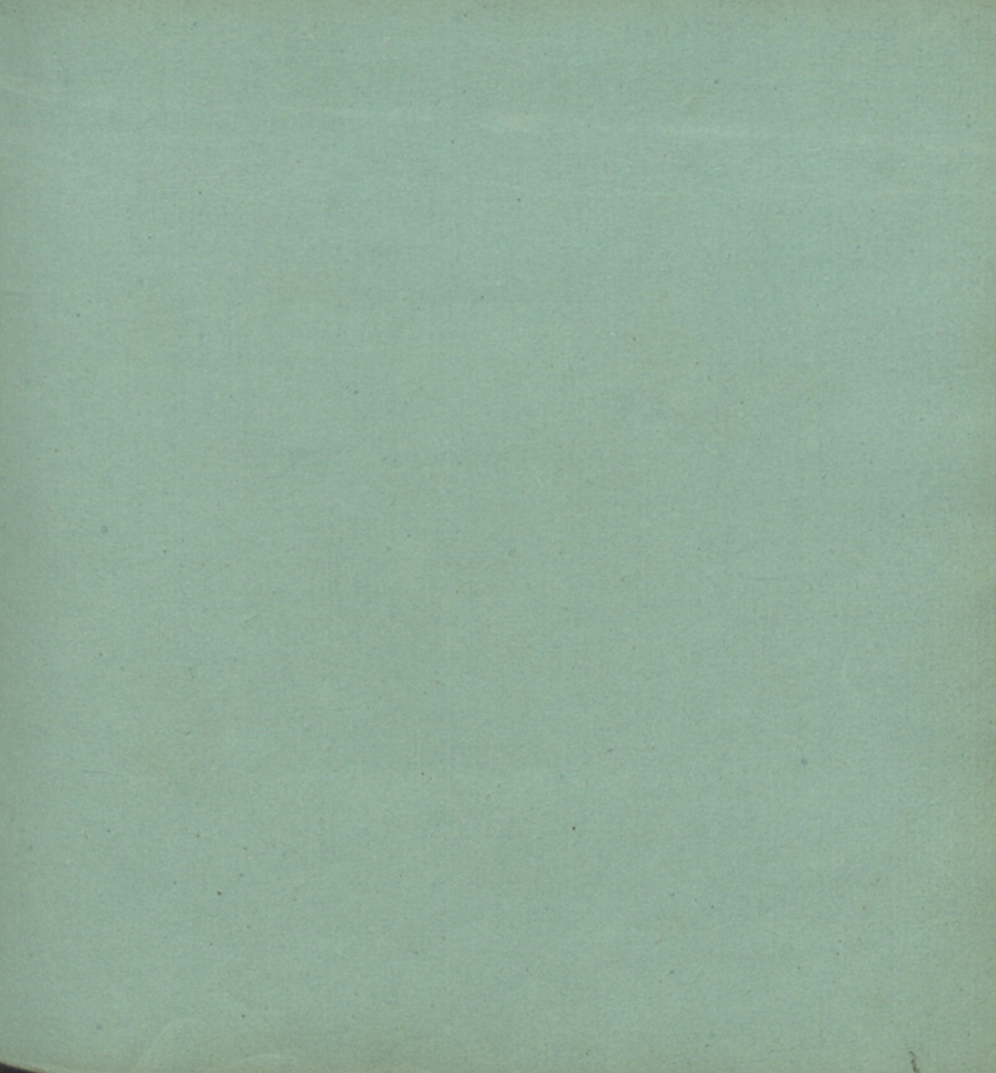


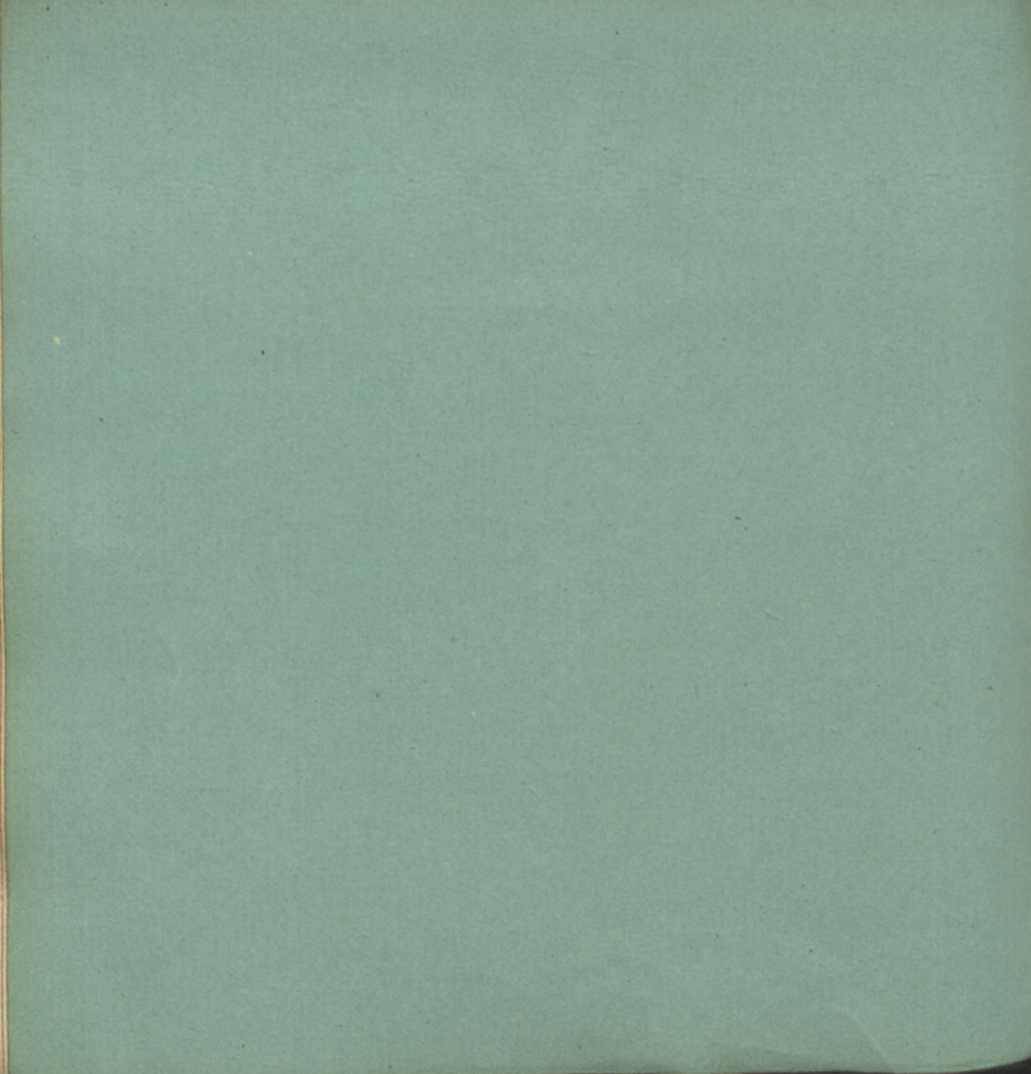


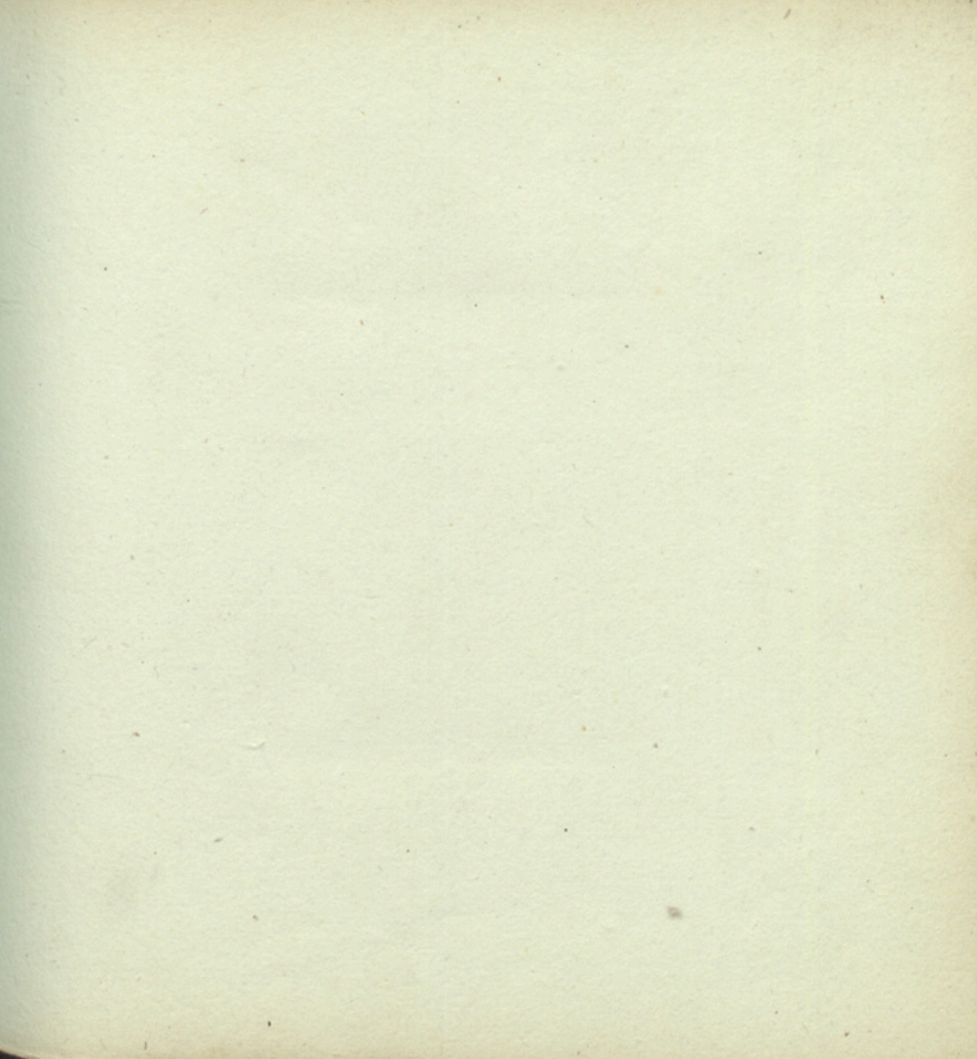


Peasants of Cintia. 1803.













5/449

ggr
hhrq

anouor

~~anouor~~

