

214 49

Lição 4.^a das Matinas da 5.^a fra Sancta. a Solo.

Soprano

Musical staff for Soprano, starting with a treble clef, a key signature of one sharp (F#), and a common time signature (C). The staff contains several measures of music, including a whole rest.

Organo.

Musical staff for Organ, starting with a treble clef, a key signature of one sharp (F#), and a common time signature (C). The text *Flautado doce* is written above the staff. The organ part features a complex texture with multiple voices.

Moderato

Ex - tracta

Musical staff for Organ, continuing the piece. It features a treble clef, a key signature of one sharp (F#), and a common time signature (C). The organ part continues with intricate textures and melodic lines.

ctu sancti Augustini Episcopi &

Musical staff for Organ, concluding the piece. It features a treble clef, a key signature of one sharp (F#), and a common time signature (C). The organ part continues with intricate textures and melodic lines.

De Sancto Augustino. 2570-1831

piscopi su per Pral — — — — — mos su — per Pral — — — — —

This system contains the first two staves of a musical score. The top staff is a vocal line with lyrics written below it. The bottom staff is a piano accompaniment. The music is in a key with one sharp (F#) and a 3/2 time signature. The lyrics are: *piscopi su per Pral — — — — — mos su — per Pral — — — — —*

mos

This system contains the second two staves of the musical score. The top staff continues the vocal line with the word *mos* written below it. The bottom staff continues the piano accompaniment. The lyrics are: *mos*

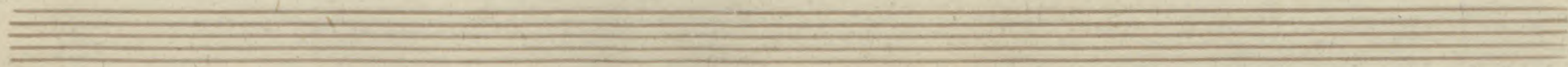
Ex au — di Deus o ra — ti — o nem me am

This system contains the third two staves of the musical score. The top staff continues the vocal line with the lyrics *Ex au — di Deus o ra — ti — o nem me am* written below it. The bottom staff continues the piano accompaniment. The lyrics are: *Ex au — di Deus o ra — ti — o nem me am*

et ne des pexeris deprecati- o nem de pre ca ti- o nem me am

intende mihi et exaudi me intende mihi et ex

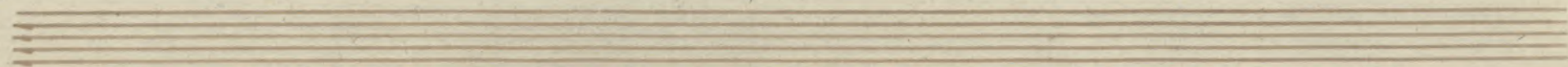
audi ex au - di me. Satagentis so -



Handwritten musical score for the first system. It consists of three staves. The top staff is a vocal line in G major, 3/4 time, with lyrics: *lici ti in tri bu la. ti— one po si ta ver ba sunt is — ta.* The middle staff is a treble clef accompaniment, and the bottom staff is a bass clef accompaniment. The system concludes with a double bar line and a repeat sign.

Handwritten musical score for the second system. It consists of three staves. The top staff is a vocal line in G major, 3/4 time, with lyrics: *o — ra mul — ta pa ti ens de ma lo li — be ra ri de ma lo.* The middle staff is a treble clef accompaniment, and the bottom staff is a bass clef accompaniment. The system concludes with a double bar line and a repeat sign.

Handwritten musical score for the third system. It consists of three staves. The top staff is a vocal line in G major, 3/4 time, with lyrics: *li be — ra — ri de si — de rans. Su — per est ut vi — de —* The middle staff is a treble clef accompaniment, and the bottom staff is a bass clef accompaniment. The system concludes with a double bar line and a repeat sign.



amus in - quo ma - lo sit & - cum di - cere

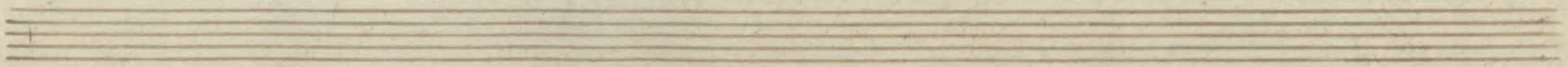
The first system of the handwritten musical score consists of three staves. The top staff is a vocal line with a treble clef and a key signature of one sharp (F#). The lyrics "amus in - quo ma - lo sit & - cum di - cere" are written below the notes. The middle staff is a piano accompaniment in treble clef, and the bottom staff is in bass clef. The music is written in a cursive, historical style.

capere a - gnos ca - mus i - bi nos esse :

The second system of the handwritten musical score consists of three staves. The top staff is a vocal line with a treble clef and a key signature of one sharp (F#). The lyrics "capere a - gnos ca - mus i - bi nos esse :" are written below the notes. The middle staff is a piano accompaniment in treble clef, and the bottom staff is in bass clef. The music is written in a cursive, historical style.

& communi cata tri bu la - ti one con ju ga

The third system of the handwritten musical score consists of three staves. The top staff is a vocal line with a treble clef and a key signature of one sharp (F#). The lyrics "& communi cata tri bu la - ti one con ju ga" are written below the notes. The middle staff is a piano accompaniment in treble clef, and the bottom staff is in bass clef. The music is written in a cursive, historical style.



mus Ora — ti o — nem. Con tristatus sum

The first system of the handwritten musical score consists of three staves. The top staff is the vocal line, written in a treble clef with a key signature of one sharp (F#) and a common time signature (C). The lyrics "mus Ora — ti o — nem. Con tristatus sum" are written below the notes. The middle and bottom staves are for piano accompaniment, with the middle staff in a treble clef and the bottom staff in a bass clef. Both accompaniment staves have a common time signature (C). The music features various rhythmic values including eighth and sixteenth notes, and rests.

inquit in ex er ci ta — ti — o — ne mea & Con tur

The second system of the handwritten musical score consists of three staves. The top staff is the vocal line, with the lyrics "inquit in ex er ci ta — ti — o — ne mea & Con tur" written below. The middle and bottom staves are for piano accompaniment, with the middle staff in a treble clef and the bottom staff in a bass clef. The music continues with similar rhythmic patterns and includes some dynamic markings like accents.

batus contur ba — tus sum. ubi con tristatus

The third system of the handwritten musical score consists of three staves. The top staff is the vocal line, with the lyrics "batus contur ba — tus sum. ubi con tristatus" written below. The middle and bottom staves are for piano accompaniment, with the middle staff in a treble clef and the bottom staff in a bass clef. The system concludes with a double bar line. Below the third system, there are three empty staves.

ubi conturbatus? in exercitacione mea

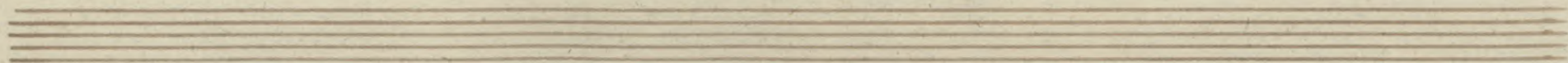
This system contains the first three staves of the musical score. The top staff is the vocal line, with lyrics written below it. The middle and bottom staves are for piano accompaniment. The music is in a key with one sharp (F#) and a common time signature (C). The vocal line begins with a melodic phrase, followed by a rest and then a more active line.

inquit Ho — mines malos

This system contains the next three staves. The vocal line continues with the lyrics. The piano accompaniment features a rhythmic pattern of eighth and sixteenth notes. The vocal line has a long note on 'inquit' followed by a more active line.

quos — patitur commemoratus est: Cum denique passio — nem ma.

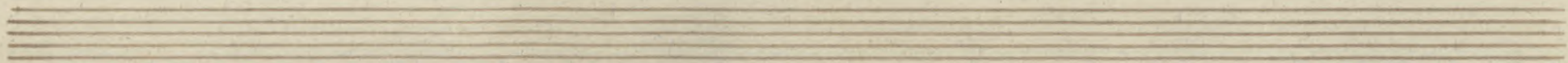
This system contains the final three staves of the musical score on this page. The vocal line concludes with the lyrics. The piano accompaniment continues with its rhythmic pattern. The vocal line has a long note on 'quos' followed by a more active line.



lo-rum hominum ex er-cita-ti-onem suam di-xit.

Ne-putetis gra-tis esse malos in hoc mundo, et

ni hil boni de il-lis agere De-um, omni malos aut i de o



vivit *ut corrigatur: aut i de-o vivit ut per illum*

bonus bonus exerceatur bo-nus exerce-a *Cadenza*

tur.

Finis.

