

Da Bella Segnata 622

De Ernesto Viini
1661-1264

Moderata

com
Acompanhamento e Piano forte

Do Senhor Mathias Jacobo Ostermuth



Canto

And. Mos.

Fianco Forte

Da Bella In

The first system of the manuscript shows the beginning of a piece. It consists of three staves. The top staff is for the vocal line, starting with a treble clef, a key signature of two flats (B-flat and E-flat), and a common time signature (C). The middle and bottom staves are for the piano accompaniment, with the bottom staff using a bass clef. The piano part begins with a series of chords and moving lines in the right hand, and a more rhythmic accompaniment in the left hand. The tempo is marked 'And. Mos.' and the dynamics are 'Fianco Forte'. The system concludes with the text 'Da Bella In' written in a decorative script.

grata Venho quei xarme q de Ma tarme se Encor re-gou? Da Bella In

The second system continues the musical piece. It features three staves. The top staff contains the vocal line with the lyrics: "grata Venho quei xarme q de Ma tarme se Encor re-gou? Da Bella In". The middle and bottom staves provide the piano accompaniment. The notation includes various note values, rests, and dynamic markings. The lyrics are written in a cursive hand, with some words appearing to be misspelled or in a specific dialect.

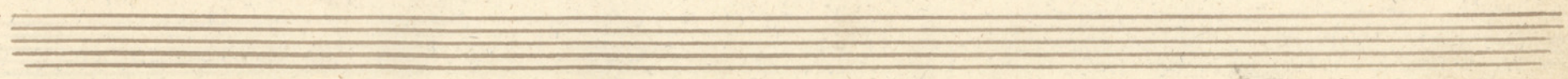
grata Venho quei - xarme q de Ma - tarme se Encor re-gou? O Li-ber-

The third system continues the musical piece. It features three staves. The top staff contains the vocal line with the lyrics: "grata Venho quei - xarme q de Ma - tarme se Encor re-gou? O Li-ber-". The middle and bottom staves provide the piano accompaniment. The notation includes various note values, rests, and dynamic markings. The lyrics are written in a cursive hand, with some words appearing to be misspelled or in a specific dialect.

dade *que* *o* *ci*o *me* *d*ira *U*fa-*na* *e*fi-*ra* *ja* *me* *Pro* *ba* *U* *Li*-*ber*-

dade *que* *o* *ci*o *me* *d*ira *U*fa-*na* *e*-*fi*-*ra* *ja* *me* *Pro*-

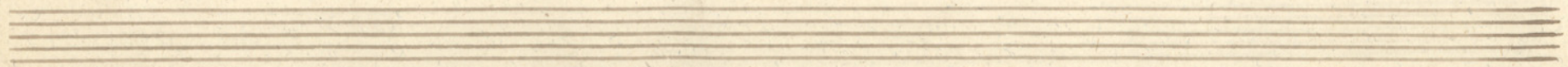
ba *Ja* *me* *Pro* *ba* *Cresc.* *Tu* *re* *so* *a*-



Handwritten musical score for the first system. The top staff is a vocal line with lyrics: *mor Vir-gi-ni della fa-re que-a Bel-la Mor-na per*. The middle and bottom staves are piano accompaniment. The music is in a common time signature (C) and a key signature of one flat (B-flat). The first measure contains a treble clef and a key signature change to B-flat. The lyrics are written in a cursive hand below the vocal staff.

Handwritten musical score for the second system. The top staff is a vocal line with lyrics: *min*. The middle and bottom staves are piano accompaniment. The music is in a common time signature (C) and a key signature of one flat (B-flat). The first measure contains a treble clef and a key signature change to B-flat. The lyrics are written in a cursive hand below the vocal staff. The piano accompaniment features a prominent melodic line in the right hand and a supporting bass line in the left hand.

Handwritten musical score for the third system. The top staff is a vocal line with lyrics: *Tra ve-si-a*. The middle and bottom staves are piano accompaniment. The music is in a common time signature (C) and a key signature of one flat (B-flat). The first measure contains a treble clef and a key signature change to B-flat. The lyrics are written in a cursive hand below the vocal staff. The piano accompaniment continues with a melodic line in the right hand and a supporting bass line in the left hand.



mor *Vin-gar-me della fa-re que a Bel-la*

Mor-ror por minn Tro-ur-so a mor Vin-gar-me della

fa-re que a Bel-la Mor-ror por minn

Tran- ves-so a-

mor Viv-ga-me della Fa-re que a Bet-la Mor-ra por

min

2 ^a	3 ^a	4 ^a	5 ^a
Das Meijores Ollas	No termo Encanto	Quando Anão vejo	Seu lindo Rosto
Sellas Vibrou	No gesto affavel	Por dura Ausencia	Se Arrebatado
Que me Encravou	Pintar-se Amavel	De Impaciencia	E desvaivado
No Coração	Humã Alma pura	Sinto Finarme	Now Beijar
Suspiros Mit	Ah não me Engana	Se Chego a Villa	De meus transportes
Fer-me Exalar	Se Fingimento	Com Magoa forte	Uma o ffindida
Fer-me Chorar	Do meu tormento	Supporto a Morte	Corta-me a Vida
Mas tudo em Vão	Gosta a prejuizo	Do Separarme	Em se Surcutar

est^o
Travesso

Travesso

Travesso

Travesso

