



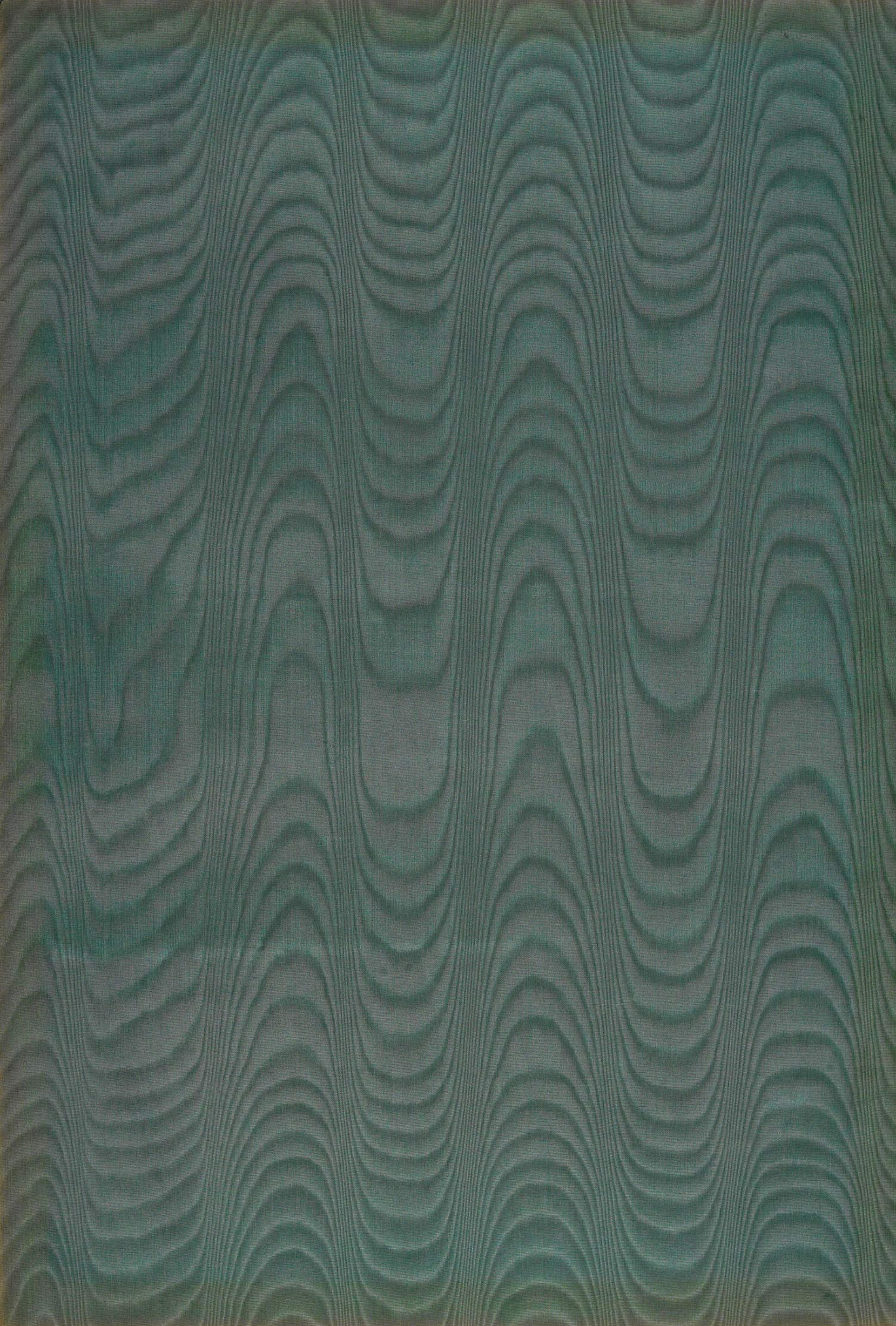
VIEWS OF CINTRA

—
BURNETT

LONDON







~~2369~~

sec. XIV

1129



Price £2.

BURNETT'S
VIEWS OF CINTRA.

Lo! Cintra's glorious Eden intervenes,
In variegated maze of mount and glen,
Ah, me! what hand can pencil guide, or pen,
To follow half on which the eye dilates,
Through views more dazzling unto mortal ken,
Than those whereof such things the bard relates,
Who to the awe-struck world unlock'd Elysium's gates?

The horrid crags, by toppling convent crown'd,
The cork trees hoar that clothe the shaggy steep,
The mountain moss by scorching skies imbrown'd,
The sunken glen, whose sunless shrubs must weep,
The tender azure of the unruffled deep,
The orange tints that gild the greenest bough,
The torrents that from cliff to valley leap,
The vine on high, the willow branch below,
Mix'd in one mighty scene, with varied beauty glow.

CHILDE HAROLD.

London:

PUBLISHED BY JOS^H DICKINSON, 114, NEW BOND STREET.

Lisbon—W. S. BURNETT, Esq. Oporto—F. F. B. SNOOK, Esq.

M^{rs} S^r Offley

Respectfully presented
by his

Ob^d h^{ble} Serv^t

[Signature]

TO

HIS MOST EXCELLENT MAJESTY,

WILLIAM THE FOURTH,

This Work,

CONTAINING FOURTEEN OF THE MOST REMARKABLE

VIEWS OF CINTRA,

IS

WITH HIS GRACIOUS PERMISSION,

HUMBLY AND RESPECTFULLY DEDICATED,

BY

His Majesty's

MOST DEVOTED AND FAITHFUL SUBJECT,

WILLIAM HICKLING BURNETT.



ENTRANCE TO THE PENNA.



View from the bridge on June 11, 1864

ENTRANCE TO GUNTUR
FROM LISBON.



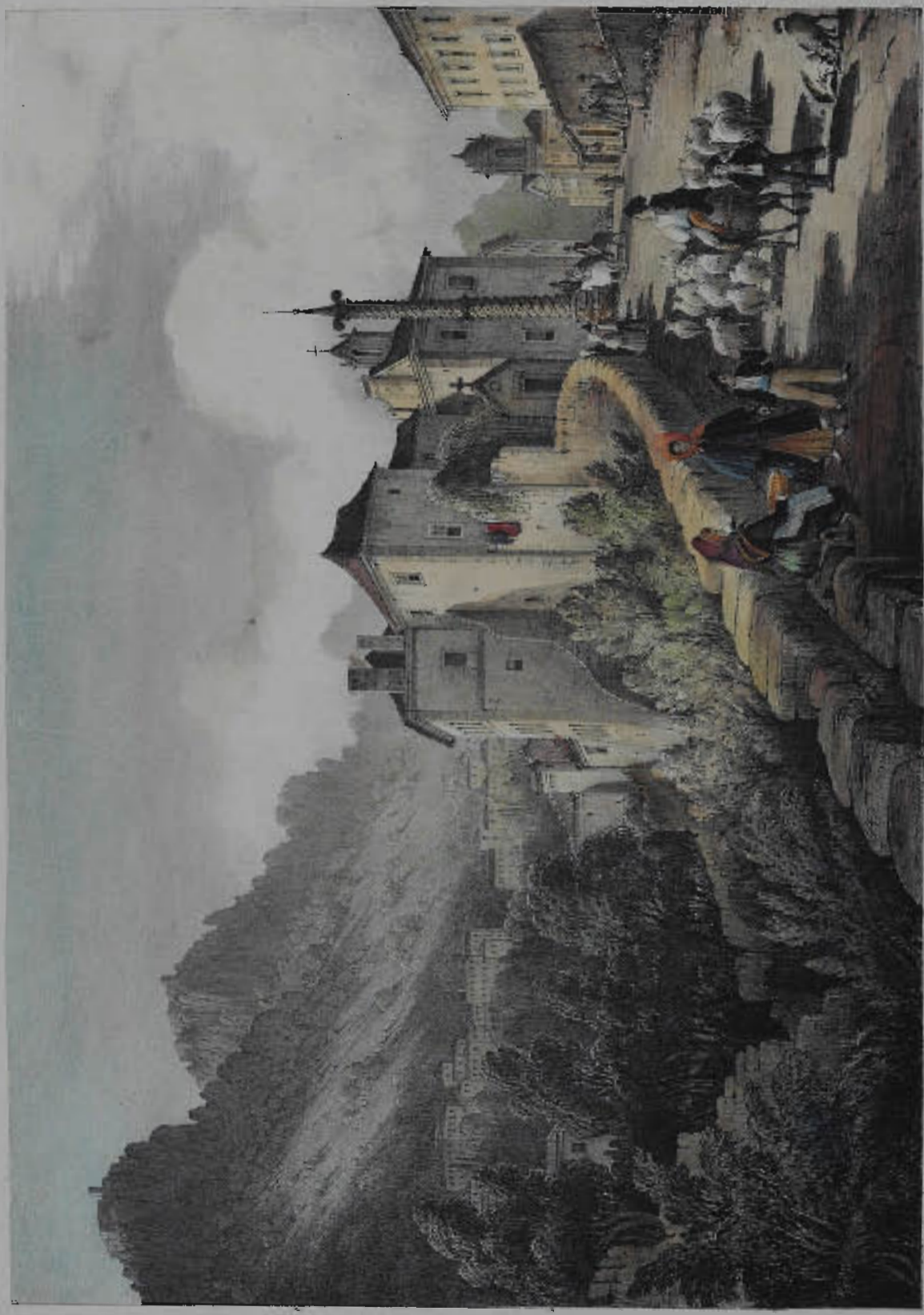
Painted by C. H. Bennett

Engraved by W. H. Sturt

GENERAL VIEW OF CINTRA.



CINTRA.



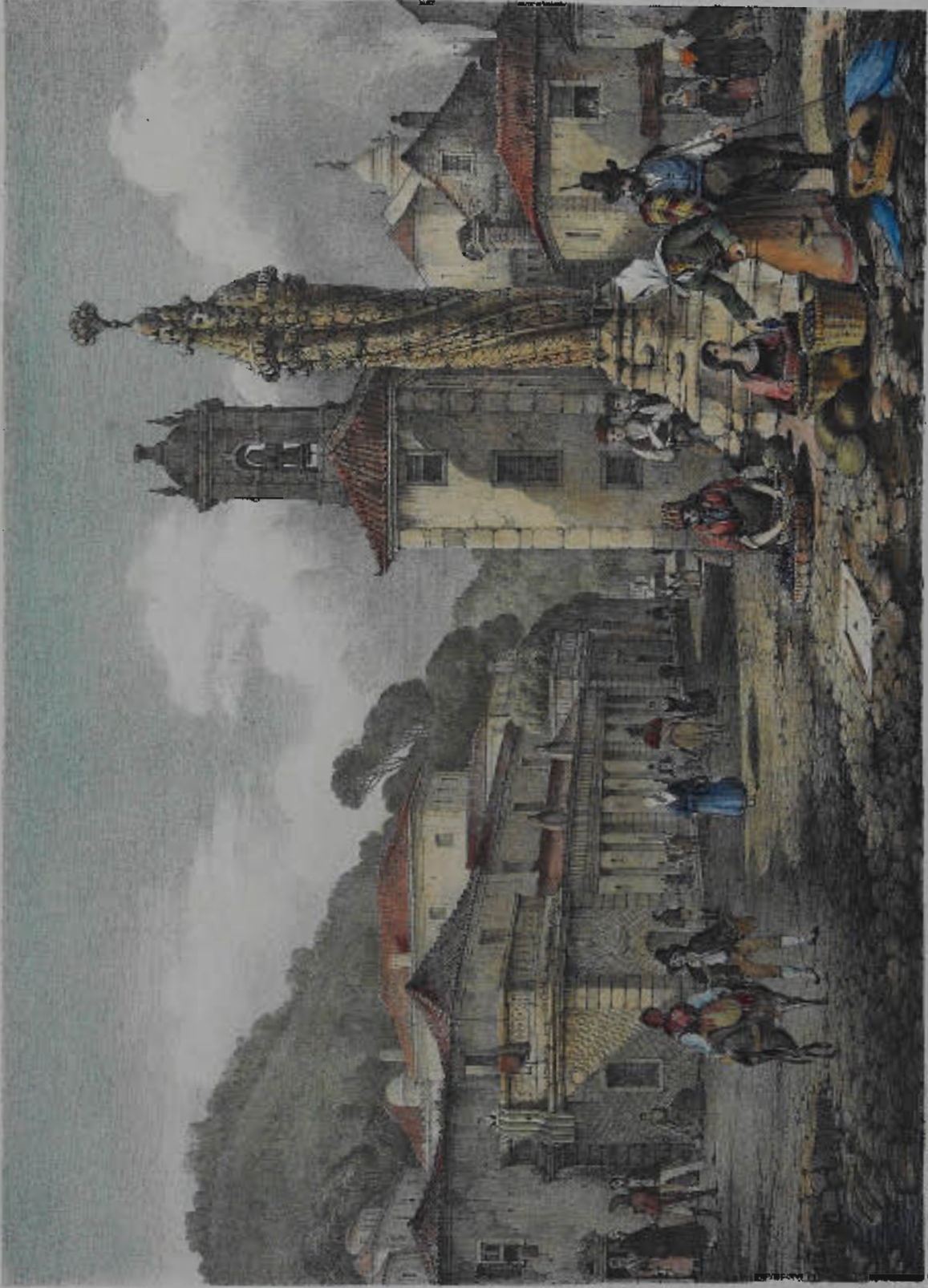
Engraved by C. W. Whittier

Designed from a sketch by W. H. Barre

CINTRA.
FROM THE EAST



CLIFF TOP
FROM THE WEST



THE MARKET PLACE,
18764

Engraving from a picture by the artist of the same name by J. M. W. Turner



THE COAST OF NANTUXET, PENNSYLVANIA.

Painted from the original by J. J. Smith

Engraved by J. J. Smith



Engraved by G. H. Williams

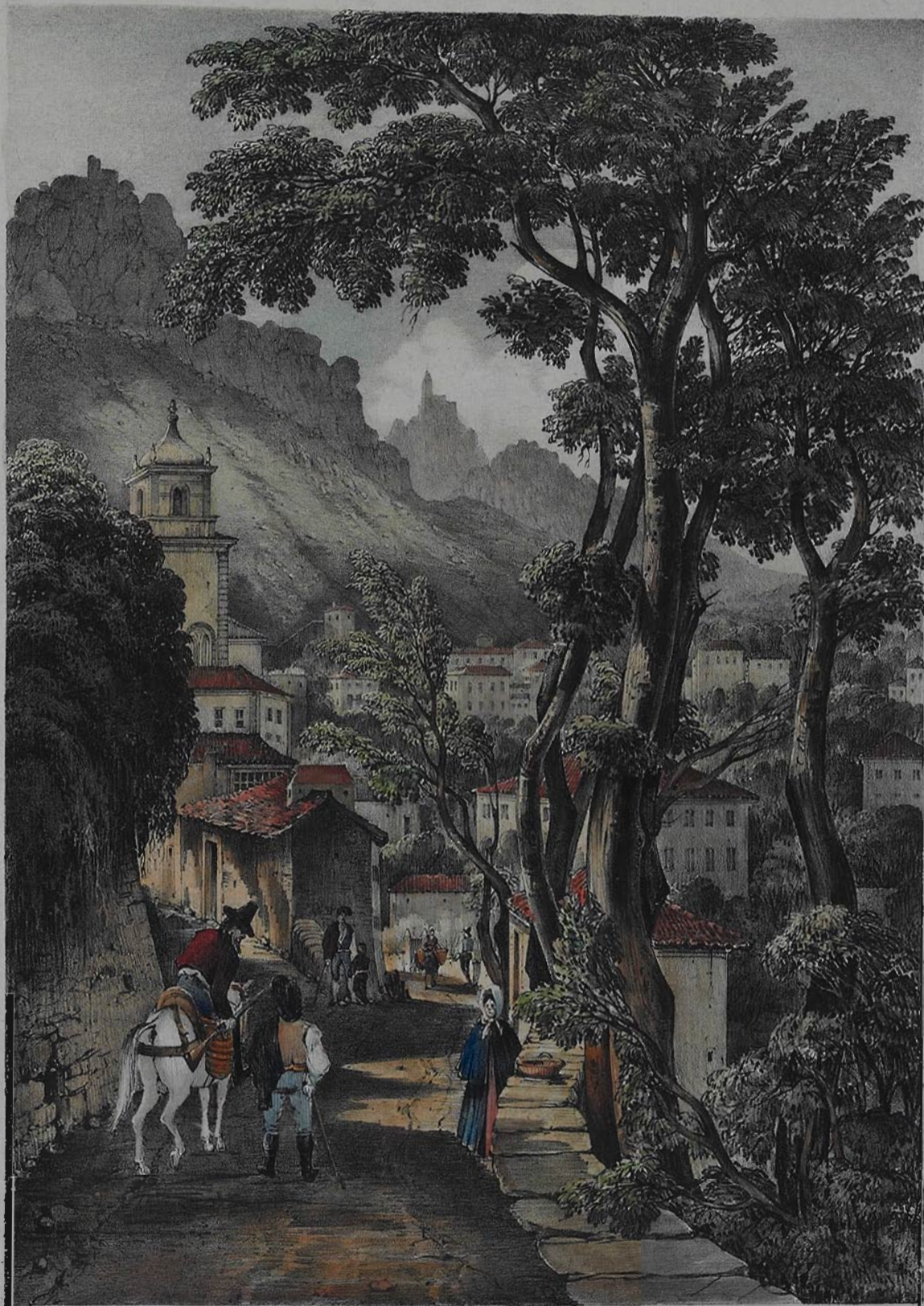
Drawing from a sketch by J. P. B. B. B.

THE CORK CONVENT.



VIEW OF THE MOUNTAINS OF SICILY. FROM THE TOWN OF MESSINA.

AA



A view from Angra do Heroísmo by W.H. Bennett.

Printed by J. Smith, London.

THE CHURCH OF CINTRA.



Engraved from the painting by G. G. G. G.

Engraved by G. G. G. G.

A PART OF THE PALACE.

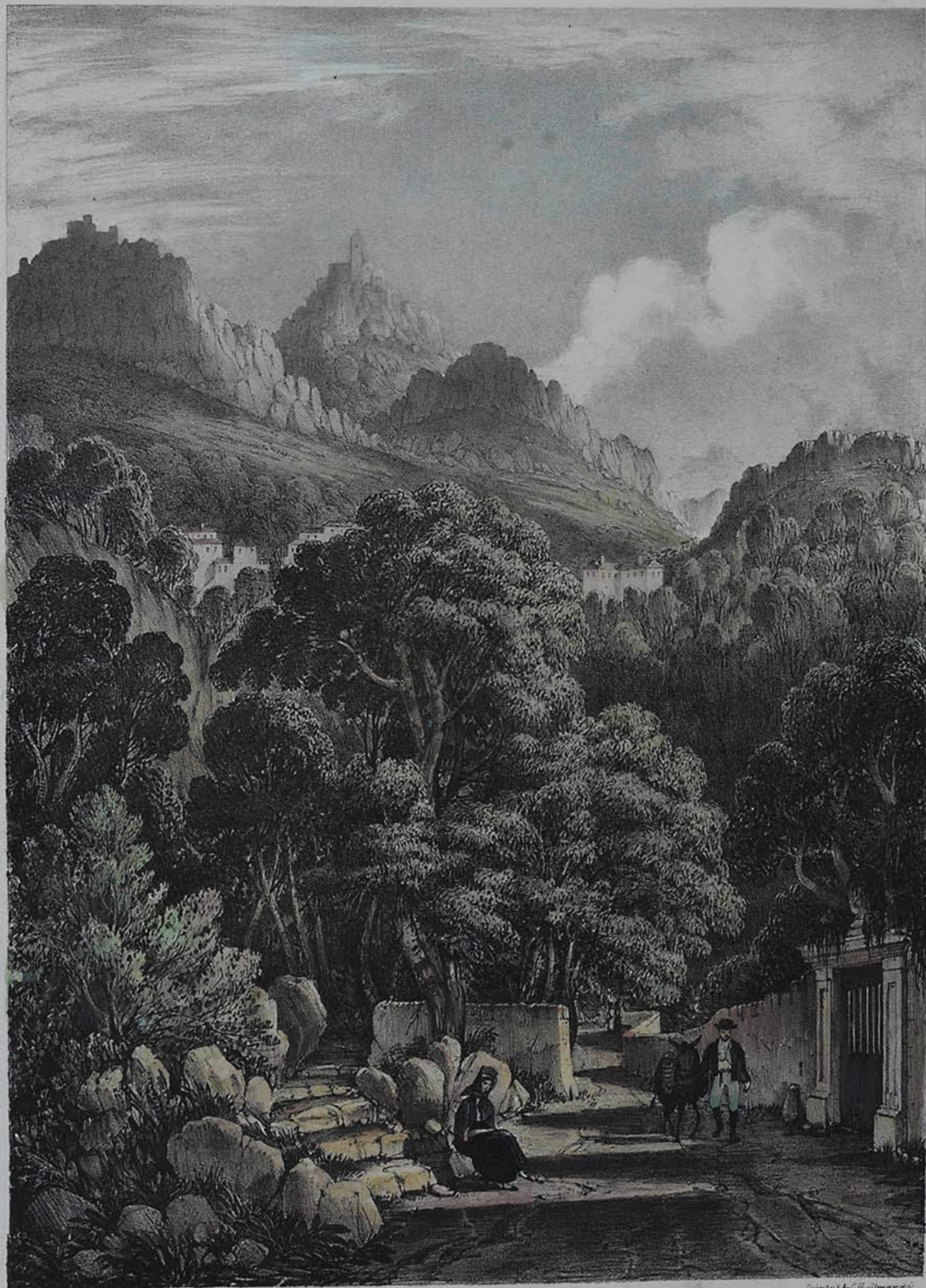
PLATE I.



Engraved from a drawing by G. H. Storer

Printed by C. Bulmer & Co.

AN OLD CHAPEL OF THE MOORISH CASTLE.



Drawn from Nature & engraved by W. H. Barnet

Printed by M. G. S. & Co.

A DISTANT VIEW OF THE PENNA. CONVENT.

