

NOVA REPERTA.



¹ Americæ. ² Lapis polaris. ³ Ignibus Amata puluis. ⁴ Imprimi volumina. ⁵ Rotisq; iugis indita hora ferreis.

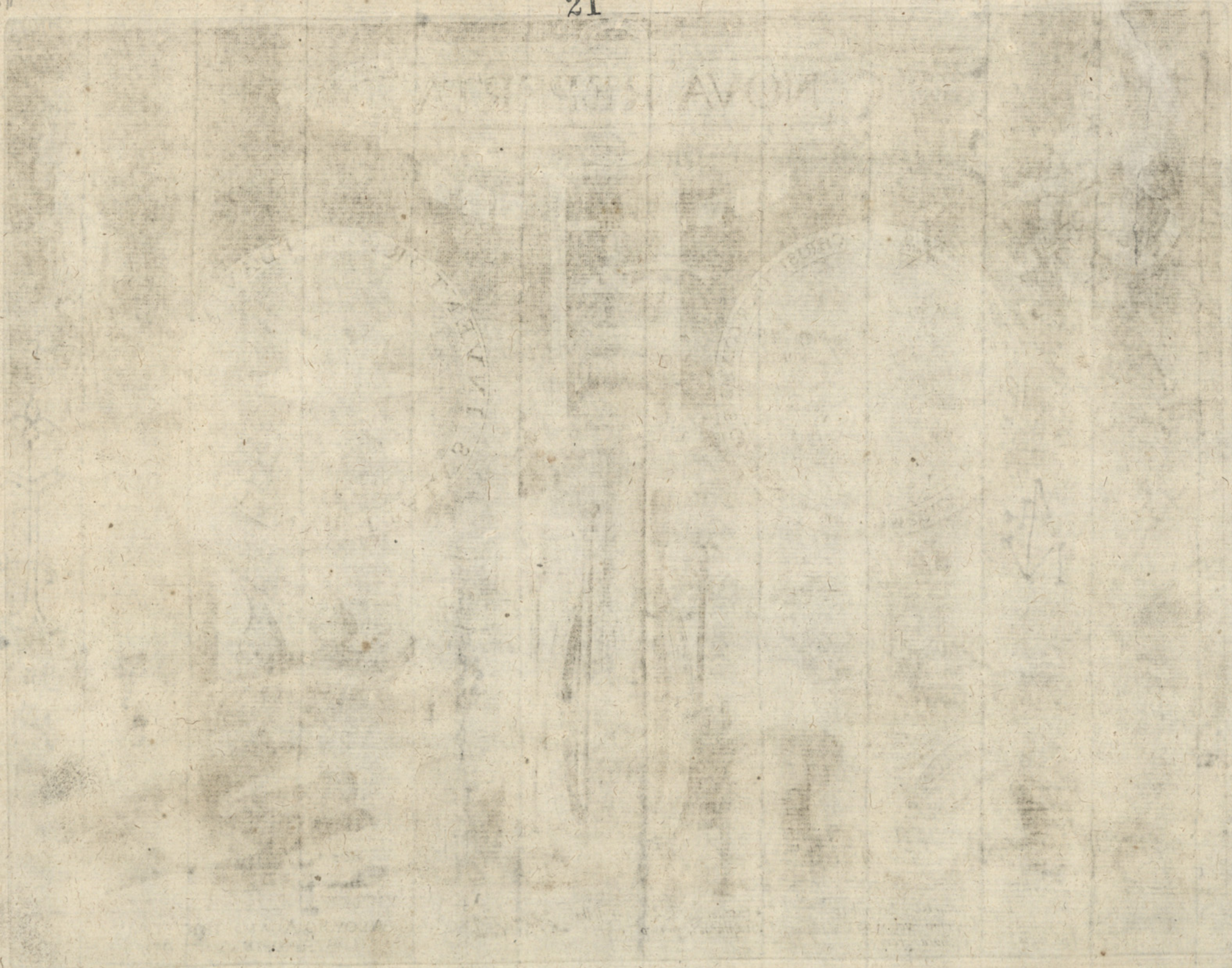
⁶ Hyacum. ⁷ Ab igne stilla. ⁸ Eila serica. ⁹ Staphæq; prisco operta cuncta sæculo.

Ioan. Stradanus inuent.

Phil's Galle excud.

ALOYSIO ALAMANNIO FLOR.^{NO}
I. STRAD. INVENT. DD.

EA 15/14 P





Ioan. Stradanus inuent.
Theodor. Galle sculp. Phils Galle excud.

AMERICA.

1. *American Americus retexit, Semel vocauit inde semper excitam.*



AMERICA
 and various other parts of the world

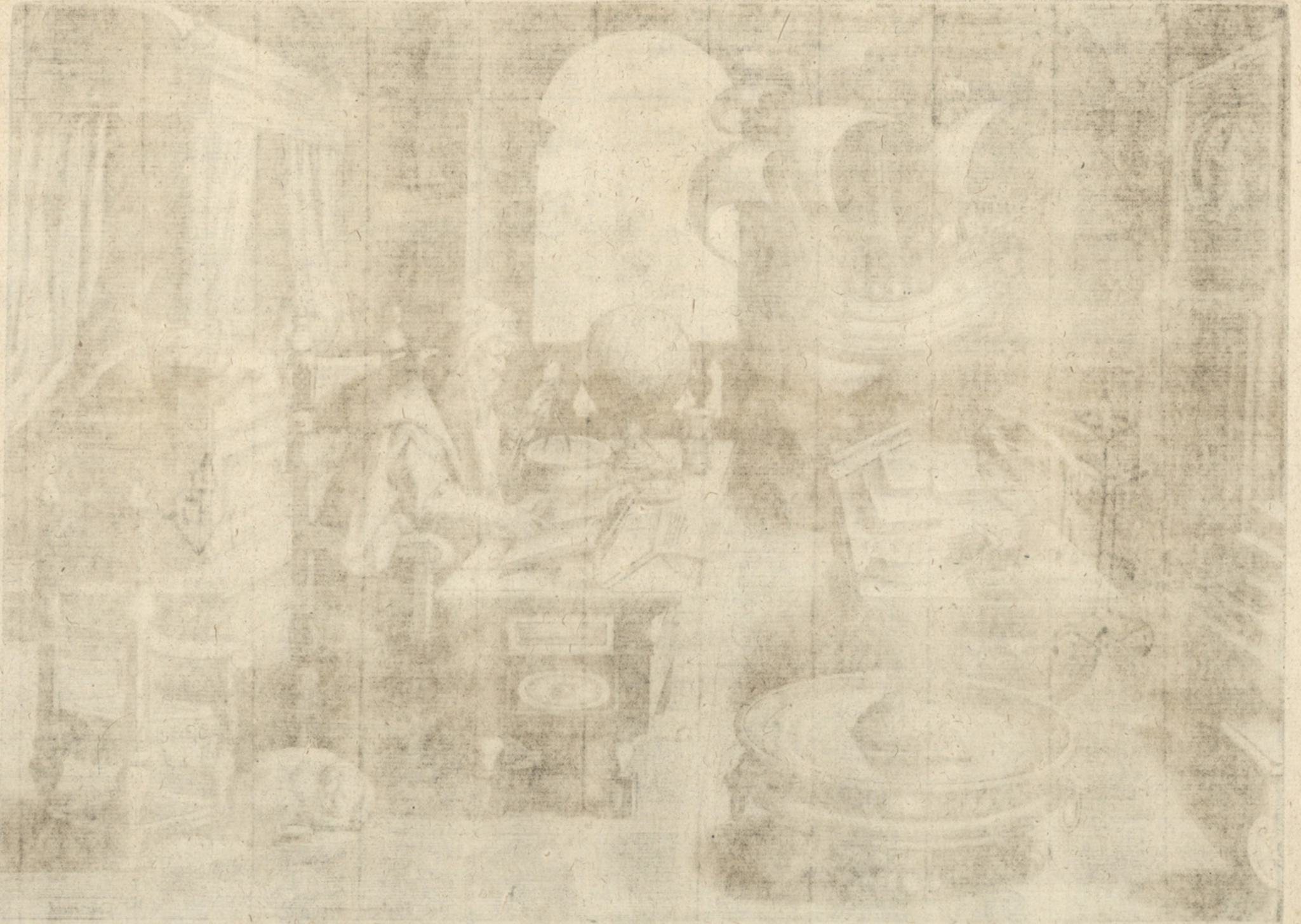


Ivan. Stralonus inuent.

Phil's Galle excud.

2.

LAPIS POLARIS, MAGNES.
Lapis reclusit iste Flavio abditum Poli suum hunc amorem, at ipse nauitæ.



Lapis noster in Flammis abstrahitur. Tunc sunt hinc aurum, ac sic aliam.

IATIS TOI ARIS MAGNES.



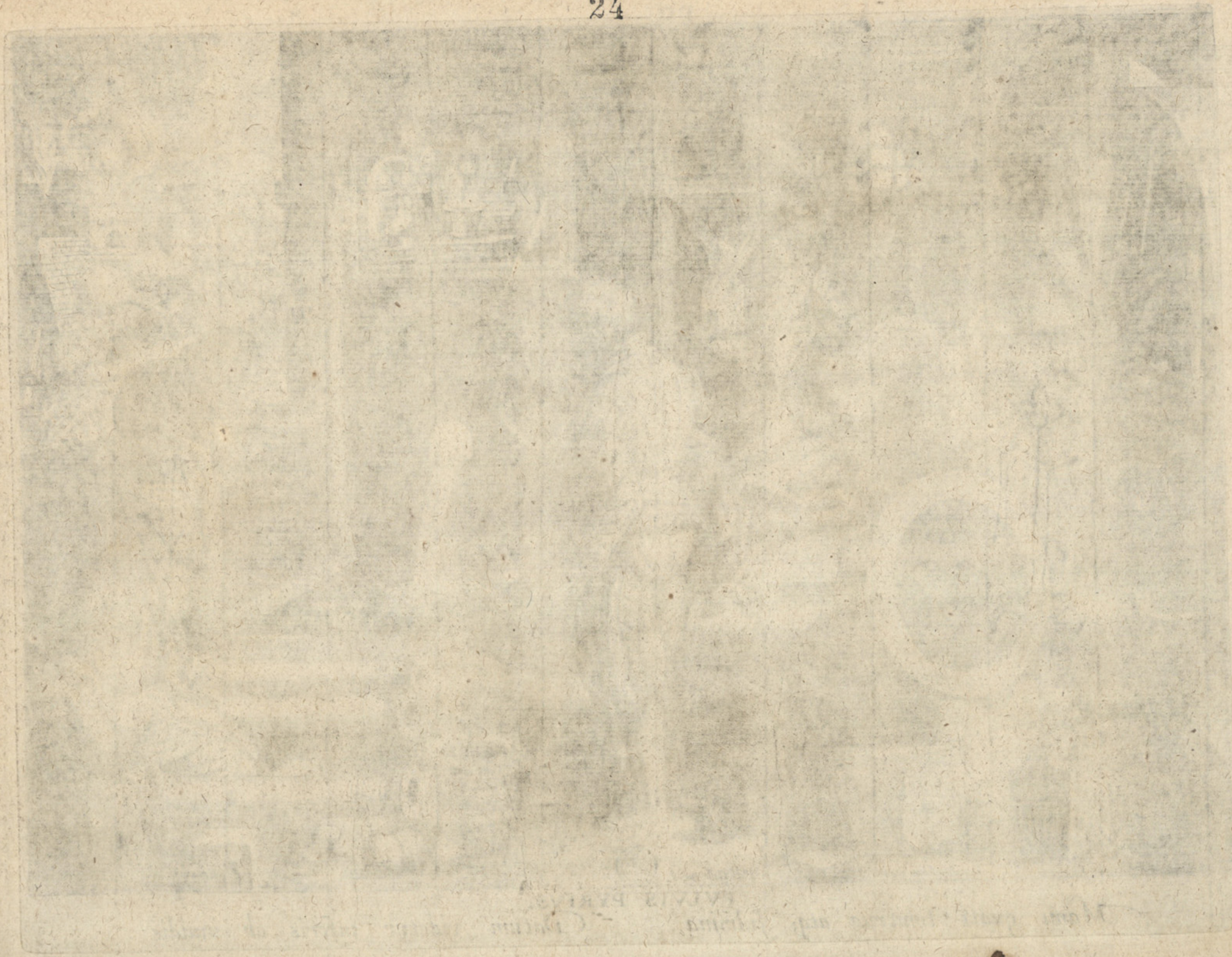
Ioan. Stradanus inuent.

Phil's Galle excud.

PVLVIS PYRIVS.

Manu quati tonitrua atq; fulmina

Datum videtur inferis ab inuidis.



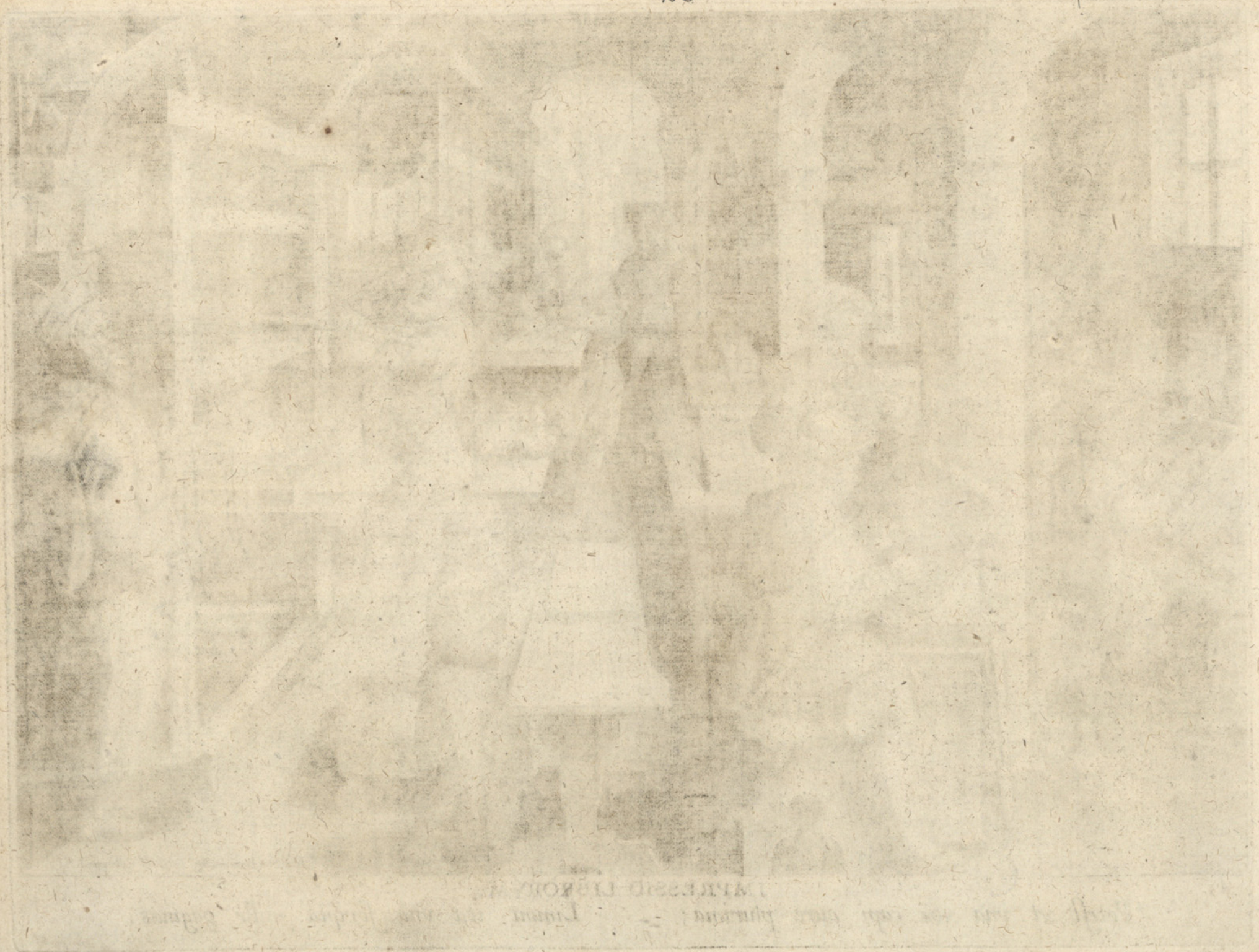


4.

IMPRESSIO LIBRORVM.

Potest vt vna vox capi aure plurima;

Linunt ita vna scripta mille paginas.



James L. ...
...



Ioan. Stradanus inuent.

Phil's Galle. excud.

5.

HOROLOGIA FERREA.
Rota æqua ferrea ætherisq; voluitur, Recludit æquè et hæc et illa tempora.



Horologia ferrea
Rehmann, caput et pedes
Königsberg, 1794

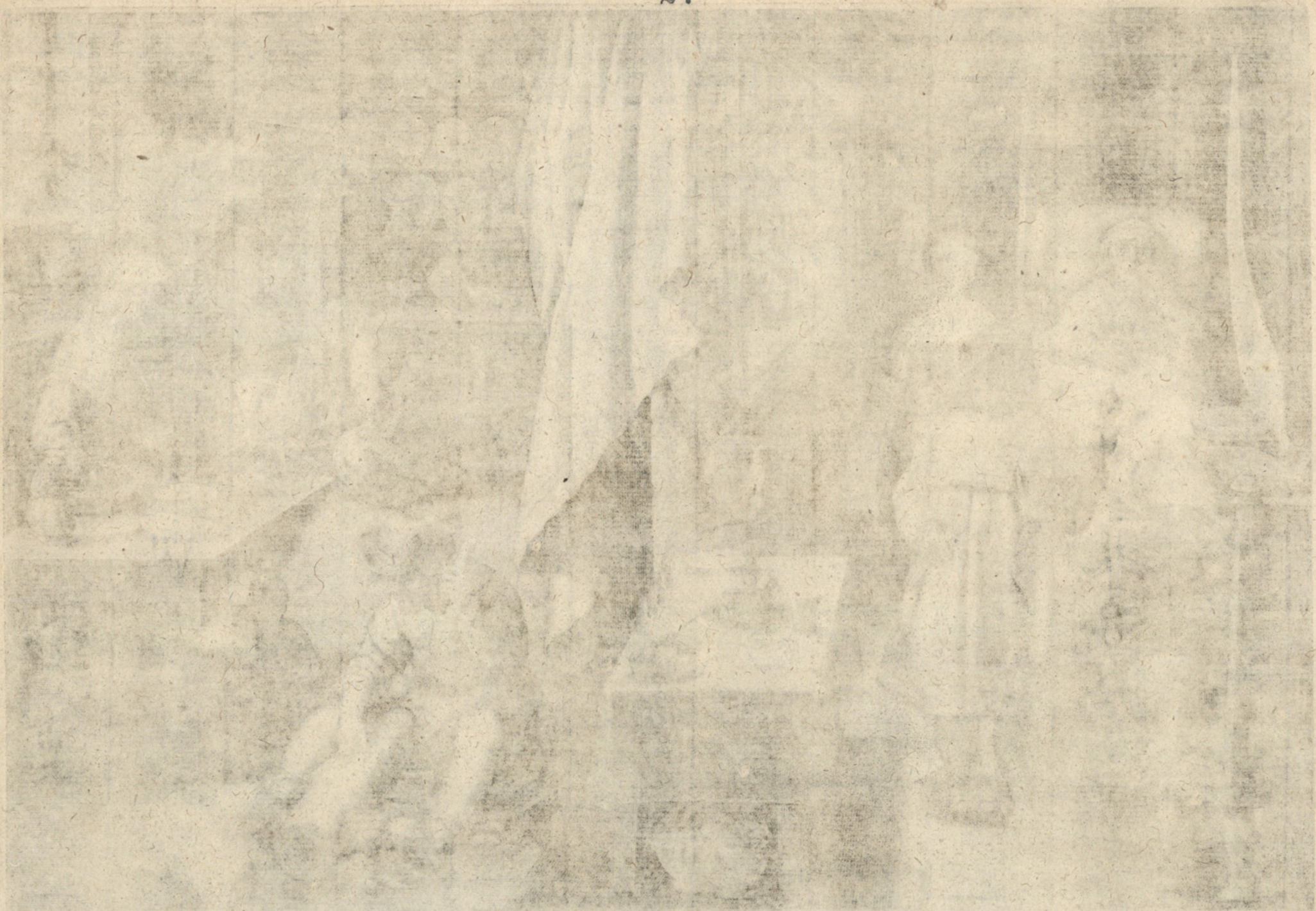


Ioan. Steudanus inuent.

Phil. Gallo excu.

6.

HYACVM, ET LVES VENEREA. (1672)
 Grauata morbo ab hocce membra mollia Leuabit ista sorpta coctio arboris.



Faint, mirrored text at the bottom of the page, likely bleed-through from the reverse side. The text is mostly illegible but appears to contain several lines of a formal document or report.



Ivan. Stradanus inuent.

Phl's Galle excud.

7.

DISTILLATIO.

In igne succus omnium, arte, corporum

Vigens fit vnda, limpida et potissima.



Ioan. Stradanus inuent.

Phil's Galle excud.

8.

SER, SIVE SERICVS VERMIS.

Ius tinianus oua vermis accipit

Serinda ab vrbe, fila qui net aurea.



THE SIVE BRICKS V. 1811
BY J. H. B. 1811



Ioan. Stradanus inuent.

Phil's Galle excud.

9.

STAPHÆ, SIVE STAPEDES.
Pedes, humi vt, stetero equo, insidentium Cito leuati, vt ipsa scala subleuat.

